



Understanding Evaluations

Becca Tagg, PsyD, MSCP, NCSP, BCBA-D

The Arc of Philadelphia
November 9, 2021





What is an evaluation

EVALUATION IS A PROCESS
THAT HELPS PARENTS AND
SCHOOLS DETERMINE
WHETHER A CHILD HAS A
DISABILITY



Requesting an Evaluation

**MAKE YOUR REQUEST IN WRITING
SCHOOL MUST RESPOND WITHIN 10 DAYS WITH A
PTE / PTRE - YOU SIGN & RETURN**

School Requesting the Evaluation



The school may also initiate the process of an evaluation
HOWEVER they cannot proceed without your permission to do so
PTE / PTRE

If you do not agree AND the school still believes it's necessary, they may seek out Due Process to have an impartial hearing officer give approval to evaluate

Designing the Evaluation

- Evaluations are a PROCESS
- The evaluation process in Pennsylvania cannot take longer than 60 calendar days (not including summer holiday) from when the LEA received your signed permission
- There will be different assessments / components of the evaluation depending on what area of eligibility is being considered
- Different professionals will be included in the process
 - SLP, OT, PT, Nurse, Psychologist, Teacher
 - YOU!
- These are set forth by IDEA





P L A N

PTIE / PTRE

SHOULD CLEARLY STATE
WHAT COMPONENTS WILL
BE INCLUDED IN THE
EVALUATION

*Some things you may
see*

DIFFERENT TYPES OF ASSESSMENTS

Hearing / Vision Screen

Cognitive Assessment

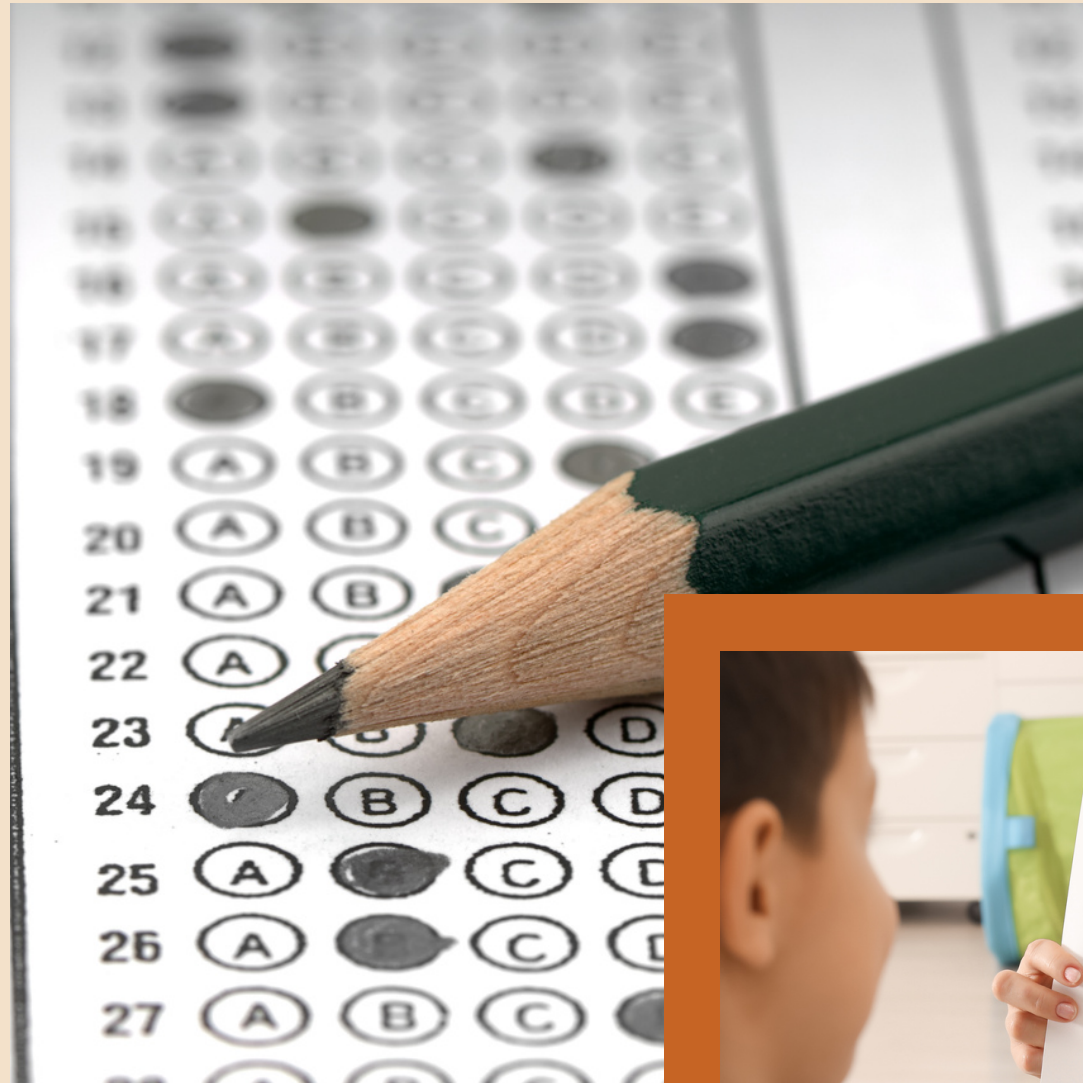
Academic / Achievement Testing

Rating Scales

Behavior Assessment

Physician Input

- Specific measures should be selected in these categories based on each child's profile



Record Review

**REVIEWING
RECORDS ONLY
PROS / CONS**





Parental Input is Key

**YOU ARE THE
EXPERT ON YOUR
CHILD**

- What do they do well?
- Where do they often struggle?
- What are your goals for your child?

13 DISABILITY CATEGORIES

- Autism
- Intellectual Disability
- Emotional Disturbance (ED)
- Other Health Impairment (OHI)
- Orthopedic Impairment
- Speech Language Impairment
- Deafness
- Visual Impairment
- Traumatic Brain Injury (TBI)
- Specific Learning Disability (SLD)
- Deaf-Blindness
- Multiple Disabilities



*Two criteria must be met to
be eligible for special
education*

MEET CRITERIA FOR ONE OF THE
13 ELIGIBILITY CATEGORIES
HAVE EDUCATIONAL IMPACT

Evaluation Report

CAN REQUEST IN ADVANCE

There are pros and cons to getting a
copy early

The Evaluation Report (ER) will include
the results from the different evaluations
that were conducted

It will also be reviewed at the results
meeting



Eligibility

**EITHER FOUND ELIGIBLE
(CREATE IEP) OR NOT
TEAM DECISION**





Quality Evaluation?

**MULTIPLE MEASURES
OBSERVATIONS
WORK SAMPLES
MULTIPLE CLINICIANS**



WHAT IF I DISAGREE?

- If you disagree with the school's findings, you have the right to request an Independent Educational Evaluation (IEE)
- You **WHY** you feel your child wasn't comprehensively evaluated and then request an IEE in writing
 - "wrong" measures, clinician didn't have the specific skill set for your child, missing professionals,
- You state what you want and by whom
- This is done by a professional of your choice and at the district's expense
- They must reply to your request in a timely manner
 - usually about 10 days





Evaluations Occur Frequently

**EVERY 2 YEARS ID
EVERY 3 YEARS ALL OTHERS**



Is this a diagnosis?

**DIFFERENCE BETWEEN
DIAGNOSIS &
CLASSIFICATION**



How will I remember all this?!



THE ARC

PROCEDURAL
SAFEGUARDS

RESOURCES

- Pennsylvania's Parent Guide to Special Education for School Age Children <https://www.pattan.net/assets/PaTTAN/2a/2a2a5b53-4694-41c8-aea6-0769490a89ed.pdf>
- Special Education Process Map - PaTTAN <https://www.pattan.net/Publications/The-Special-Education-Evaluation-IEP-Process>
- Wrightslaw Special Education and Advocacy <https://www.wrightslaw.com/>
- The Procedural Safeguards provided by your LEA (Local Education Agency) or School District