

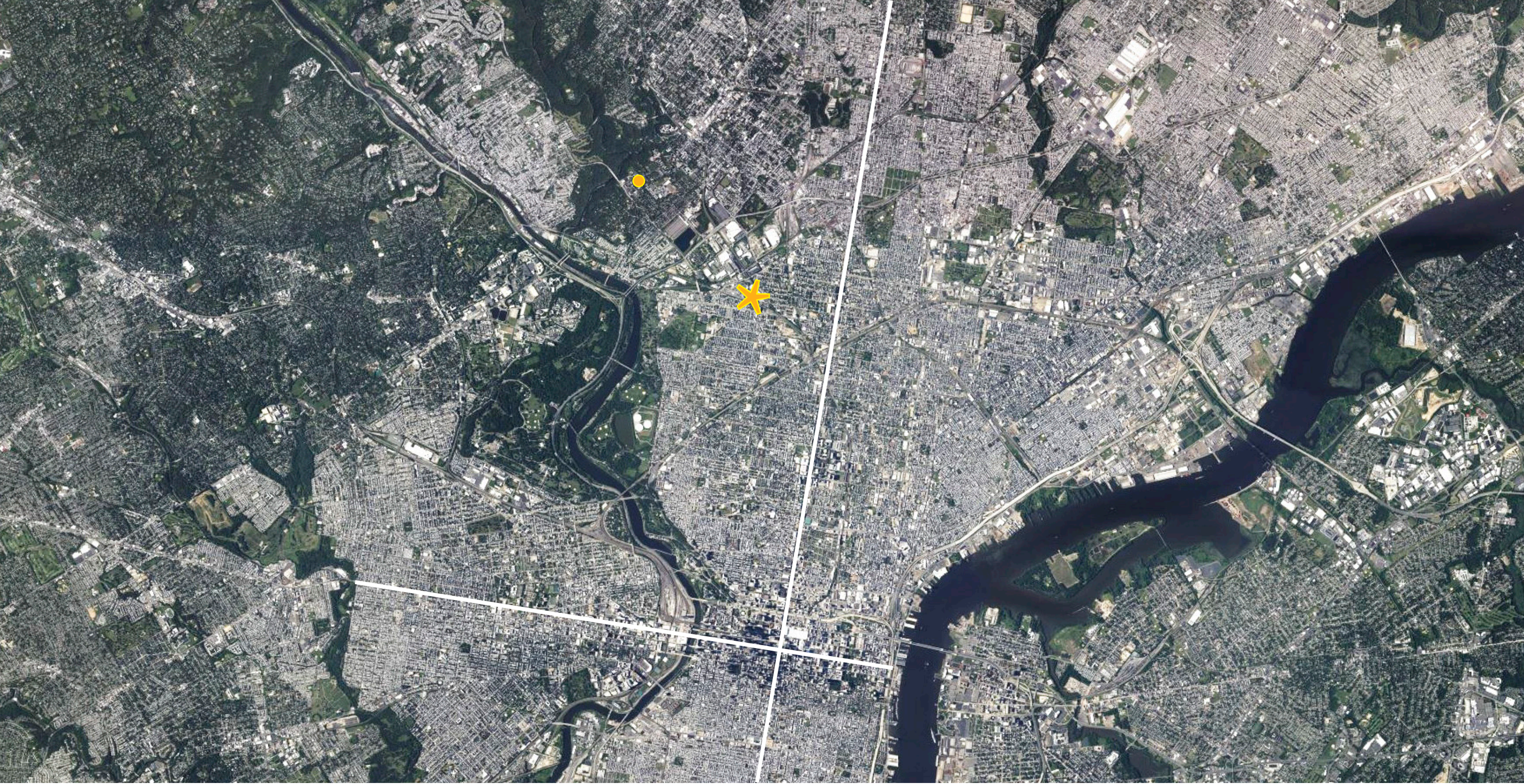
COLLEGE OF ARCHITECTURE & THE BUILT ENVIRONMENT

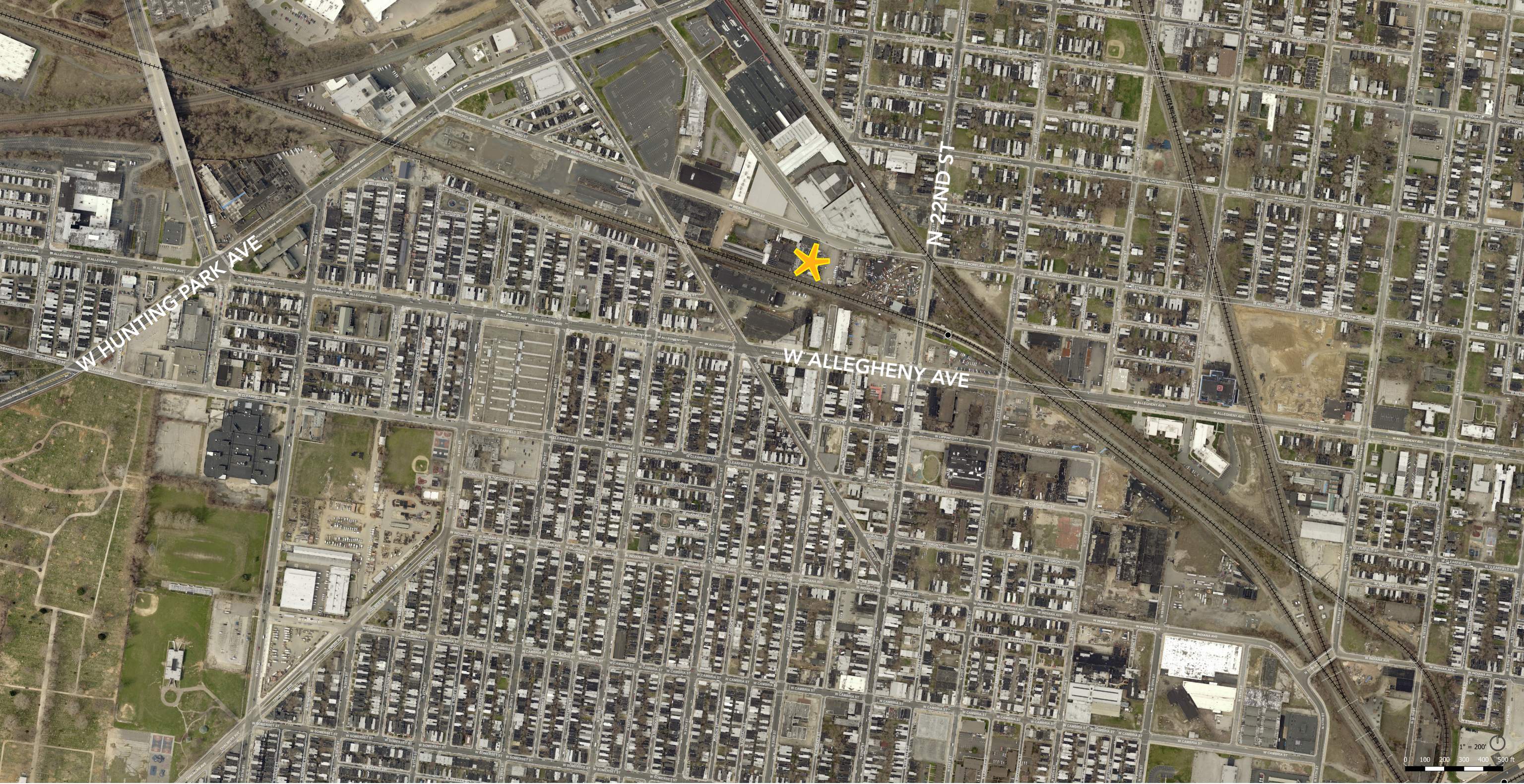


# Landscape Architecture

2<sup>nd</sup> + 3<sup>rd</sup> year undergraduate studios

project site

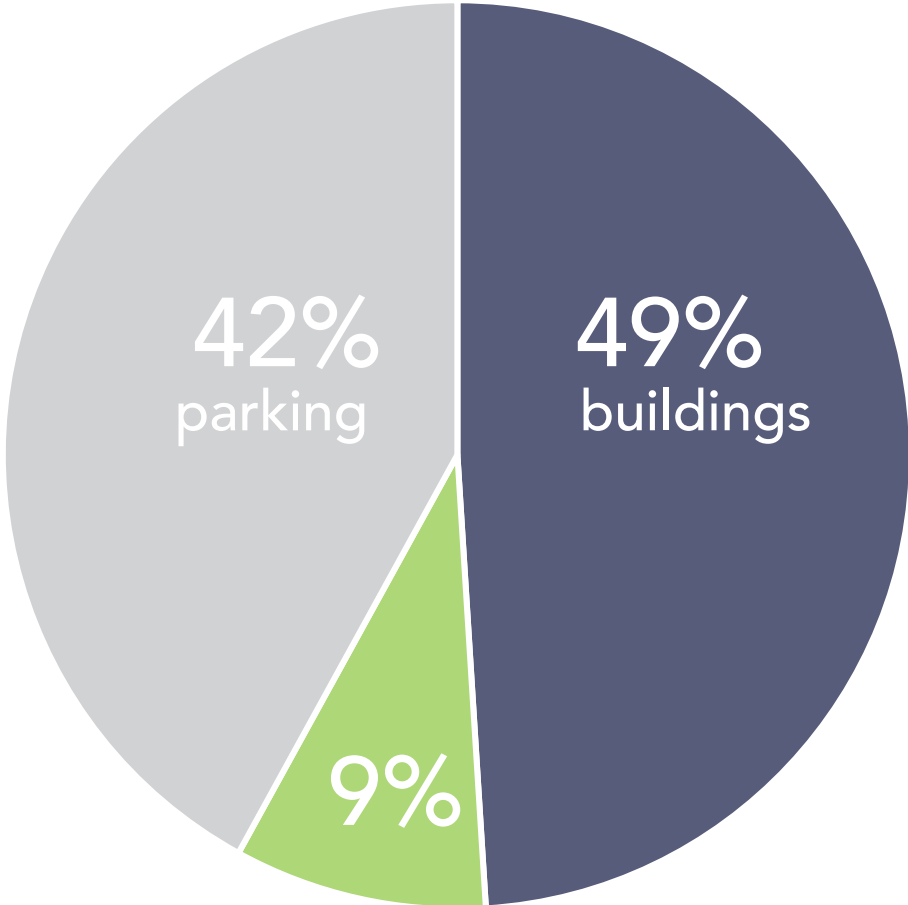




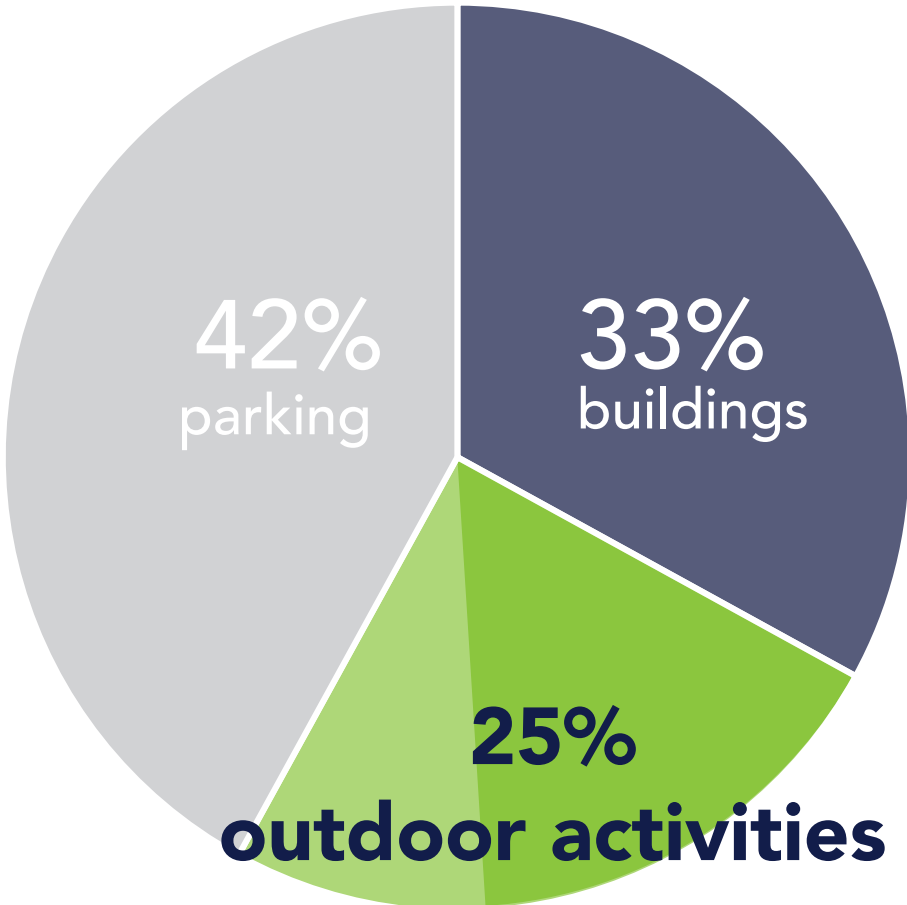




# Current Site Use



# Post-Demo



- Buildings
- Outdoor activities
- Parking / vehicle circulation



2350 W. Westmoreland St.









Photocollage: Elizabeth Voss



Photo: Elizabeth Voss

site: physical conditions

workshop 1

site: temporal conditions

workshop 2

context: urban systems

vision, goals, and program

concept design



SpArc  
Philadelphia



workshops

COLLEGE OF ARCHITECTURE & THE BUILT ENVIRONMENT

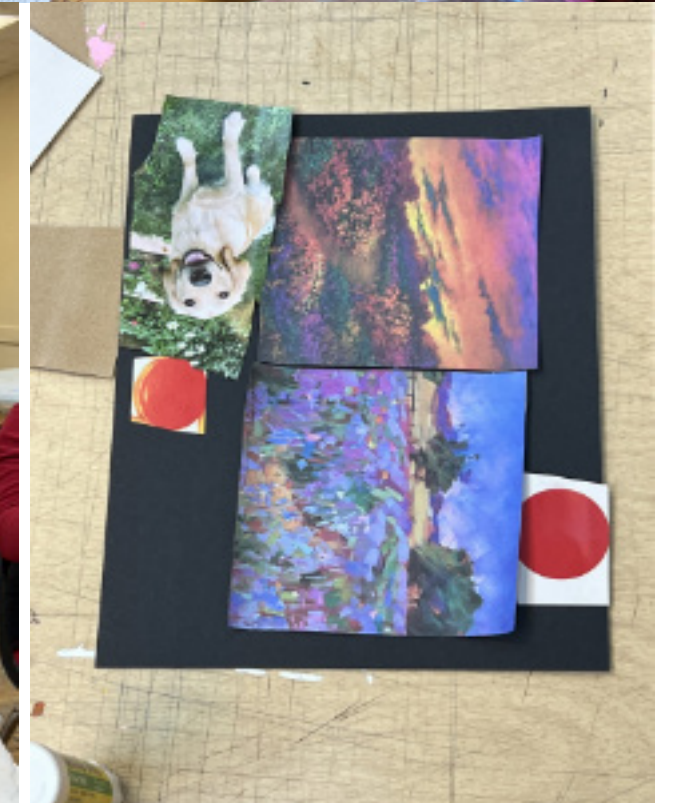
# SPARC COMMUNITY ENGAGEMENT



**Jefferson**  
Thomas Jefferson University

# ENGAGEMENT 1

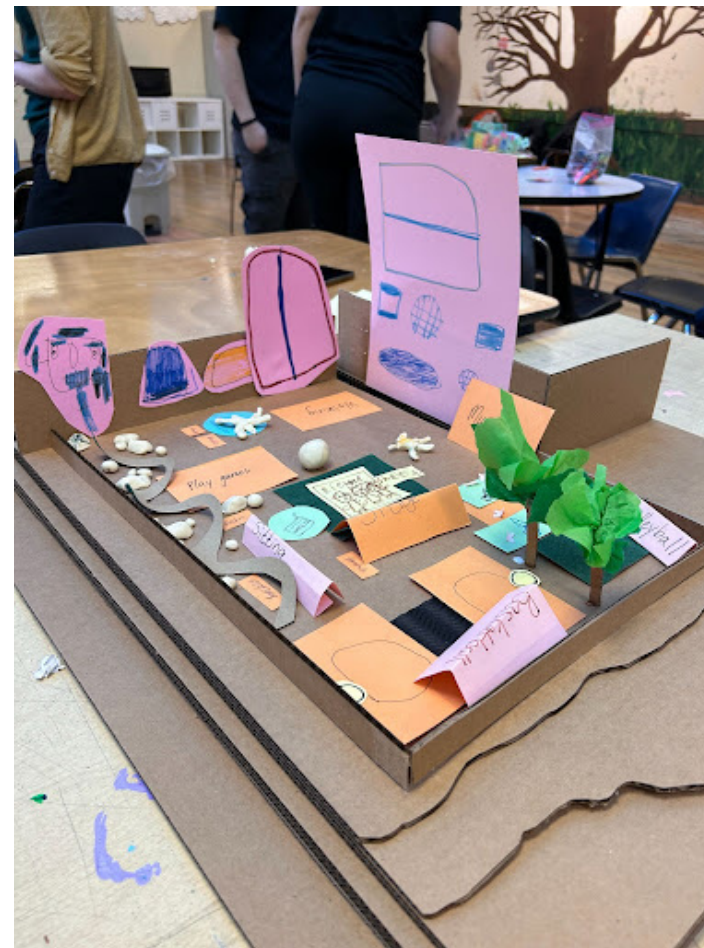
This activity focused on visuals. It included making a collage to get an idea of what participants like to see outdoors. We included materials such as photos of different patterns, papers, sandpaper, natural materials and magazines.



SERMA BASHA, LOGAN LEWIS, LAILA HASSAN  
LANDSCAPE ARCHITECTURE PROGRAM | SPRING 2023

# ENGAGEMENT 2

This activity required the individuals to think about textures and program. We had the participants name activities they wanted to happen and had them place those cards where they would be best on the site. After defining the program areas, we gave them surface finishings and added details of vegetation and other





# RESULTS

These activities gave us a better idea of what the Sparc community wanted to interact in the their outdoor spaces, as well as how its different aspects made them feel. We then sought to use this information to influence our site designs.



COLLEGE OF ARCHITECTURE & THE BUILT ENVIRONMENT

# SpArc Engagement Activities



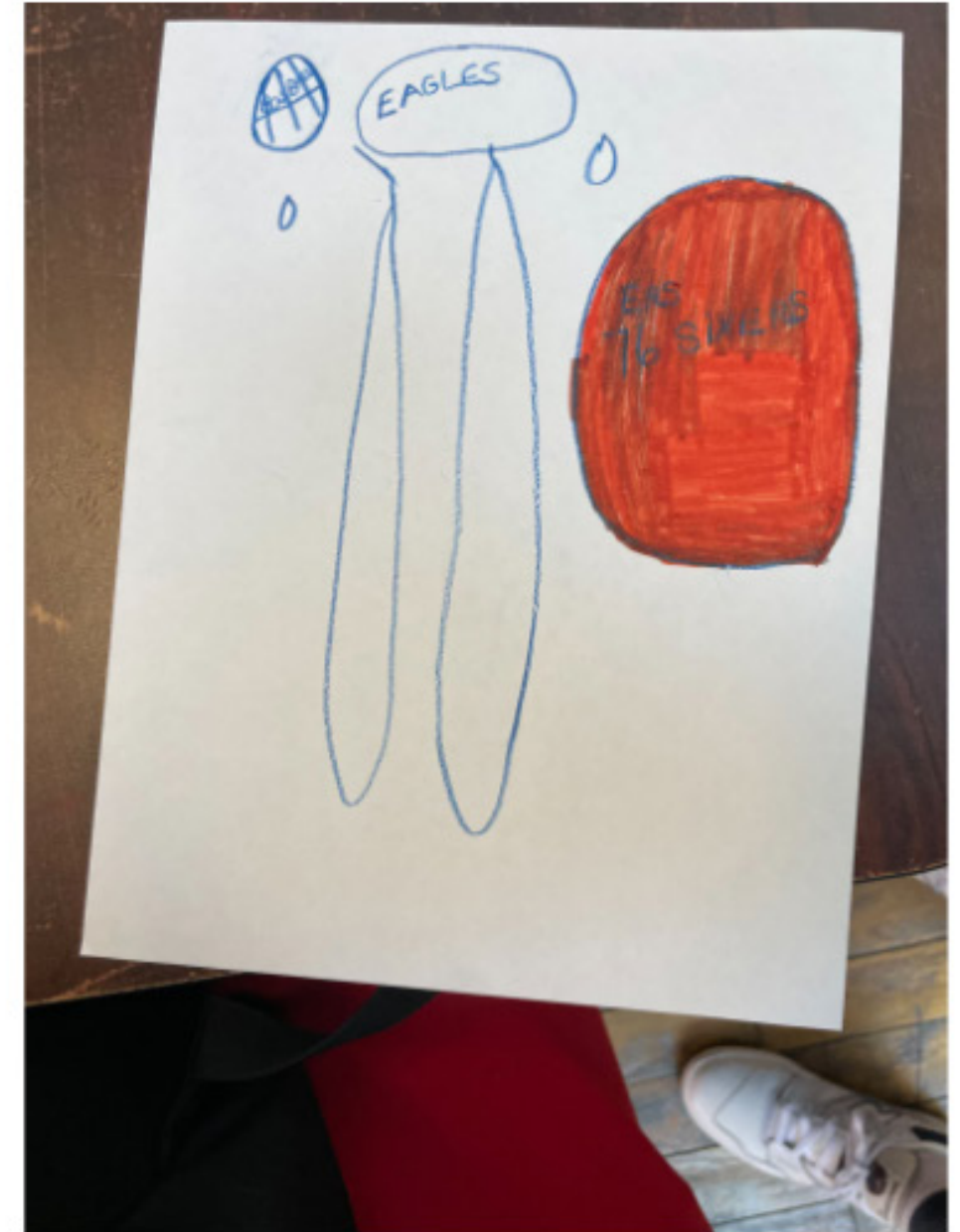
# Steps We Took to Prepare

---

1. Site Visit
  - a. At the site we got an understanding of the existing conditions and met with the people at SpArc
2. Develop ideas for engagement
  - a. After visiting the site as partners we began to develop a plan for engagement with SpArc
3. Put together a prototype for the engagement
  - a. After we finalized our plan for engagement, we made a prototype to better understand how we can perform the engagement
4. Engagement with SpArc
  - a. With the help of the individuals at SpArc we were able to get a better understanding of how to approach the design aspect

# Working with SpArc

- Our workshop consisted of brainstorming our emotions and activities that express those emotions
- We then put together drawings from the list of items we brainstormed



# Working With SpArc Part 2

---

Our next workshop with SpArc consisted of designing on an assembled 3D Model

- We started with the participants making trees, rocks, and other drawings of physical aspects for the model
- Next we placed them on the model and got feedback of where they wanted to see different design elements
- Then we would draw and create more pieces and placed them as we went

# Workshop Photos



# What we learned

---

Takeaways from this engagement:

1. Trees were a hit: the participants we talked to all wanted trees on site, and more than just a few
2. Open grass: One of the biggest design aspect was the football field we created and the want for a open space for activity
3. The fan favorite was basketball
4. Many participants expressed the want to walk on paths with benches and greenery

COLLEGE OF ARCHITECTURE & THE BUILT ENVIRONMENT

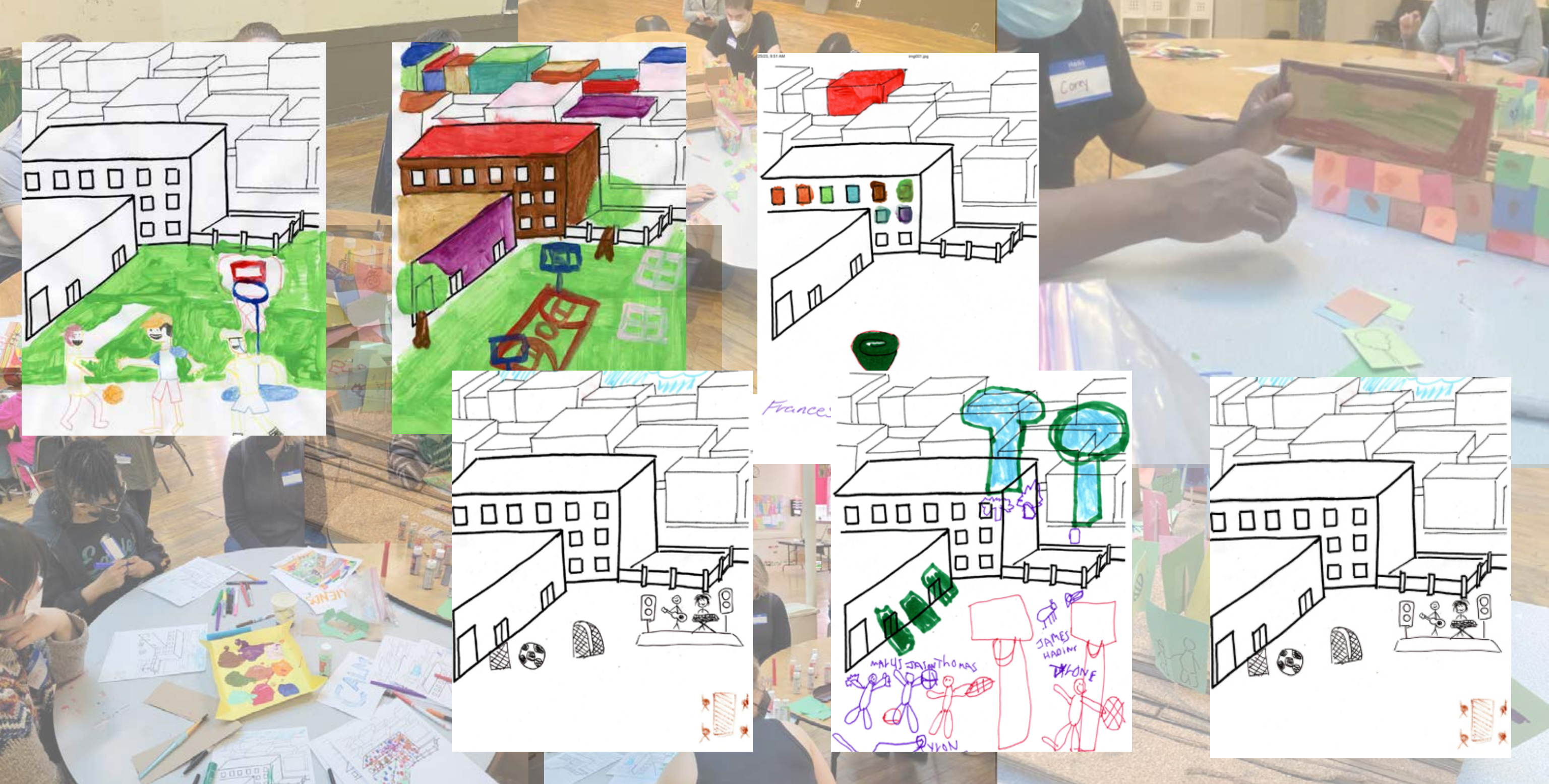
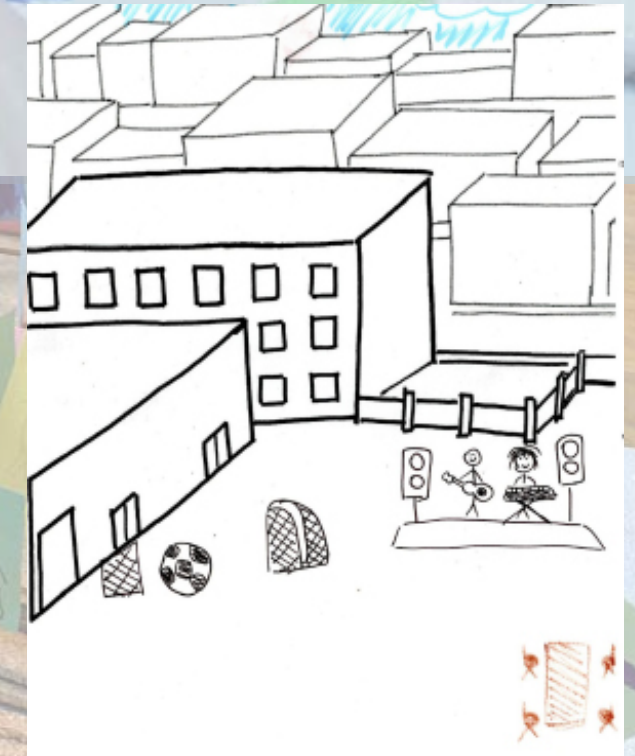
**COLOR +  
ACTIVITY +  
GROUPINGS**



**WORKSHOP 1+2 - Milnes+Voss**



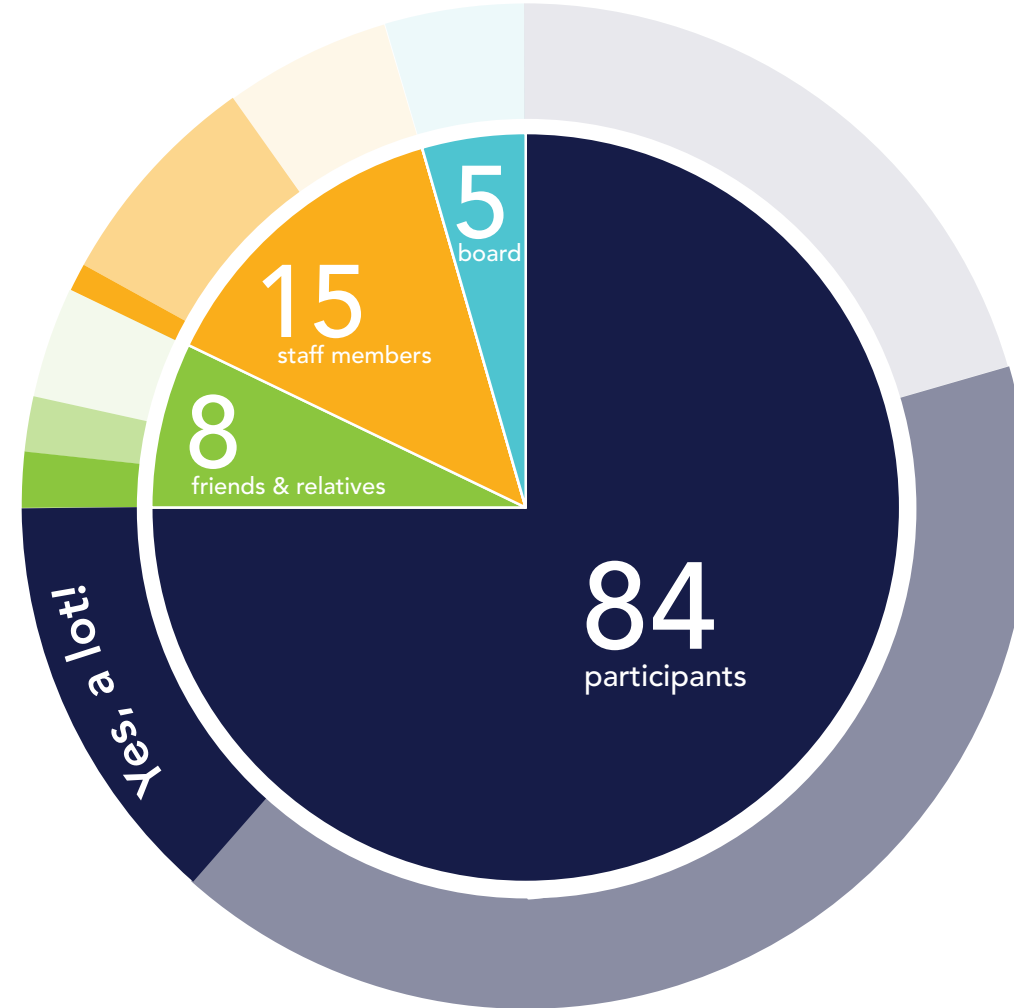




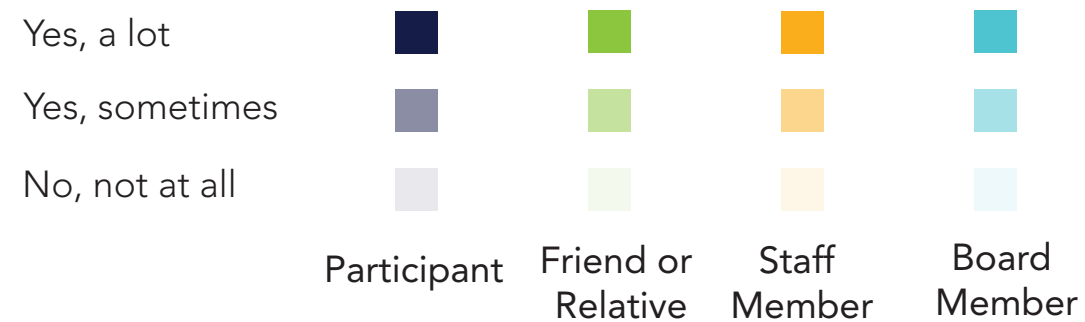


survey

# Who took the survey?



## Do people surveyed use the outdoor areas at SpArc?

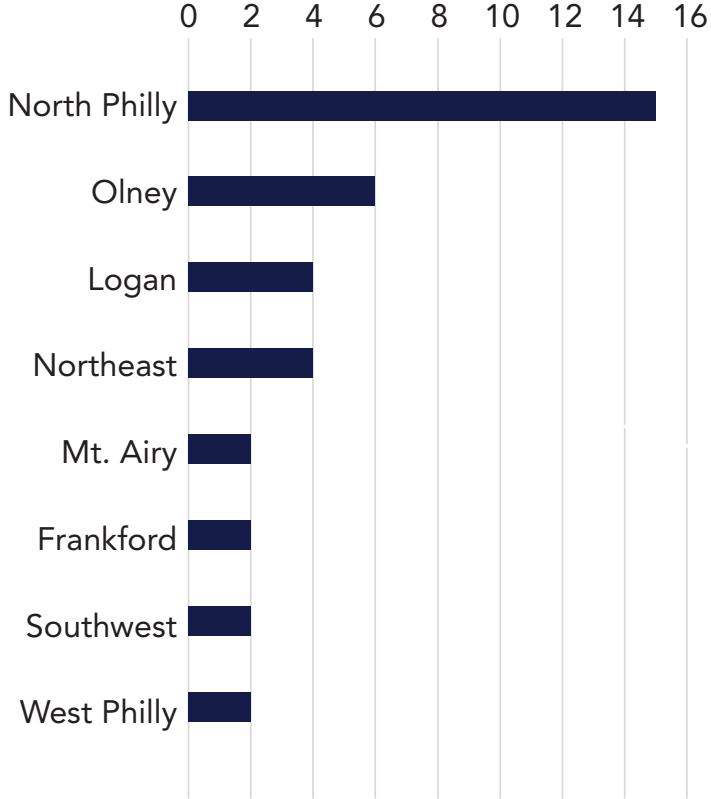


SpArc distributed online and print surveys. Responses were collected February 21 to March 20, 2023. 112 people responded.



# What neighborhoods are participants from?

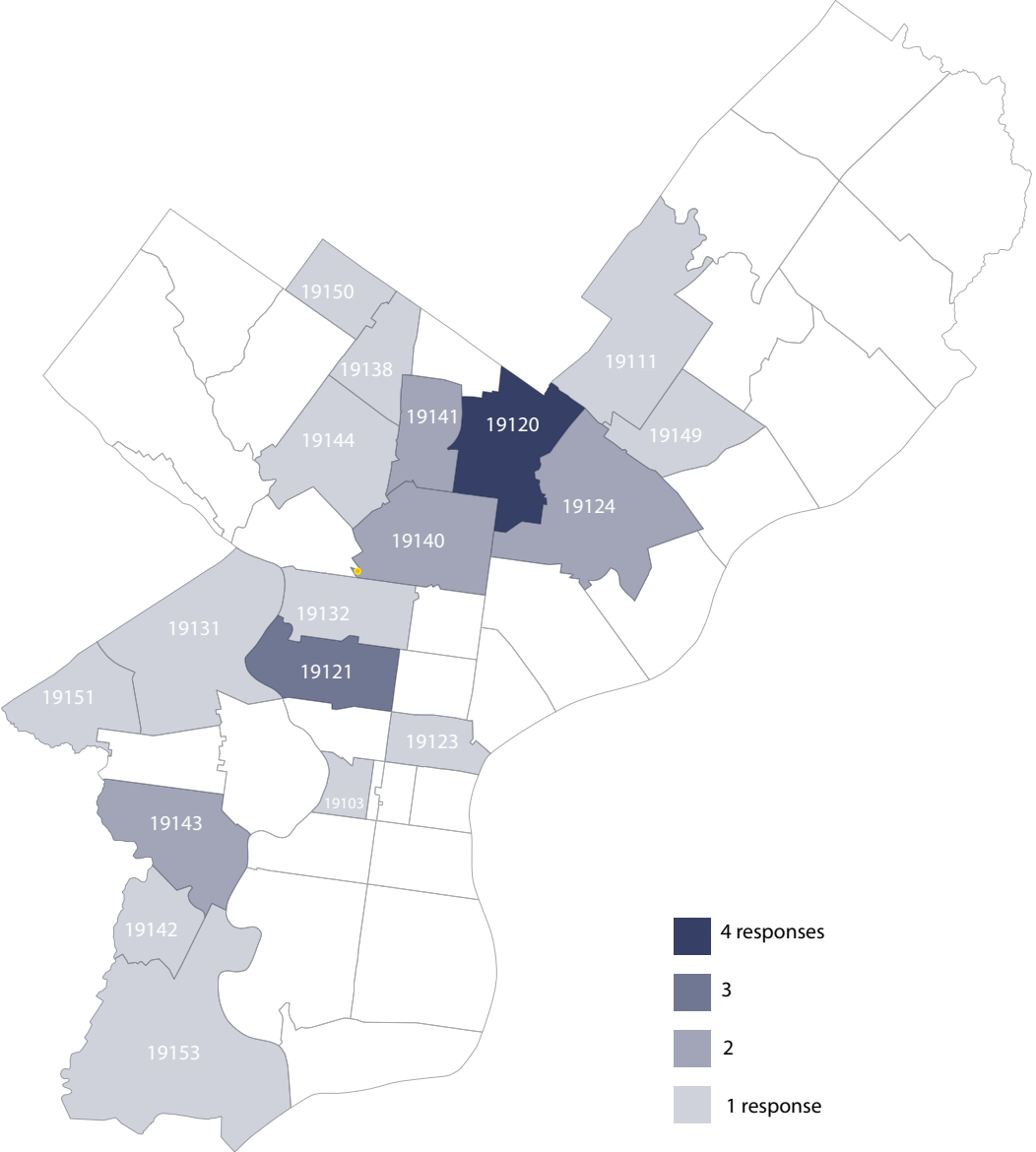
47 responses total



1 response each:  
 Broomall, Darby, East Oak Lane, Julianna,  
 Lawndale, Lindberg, Overbrook, South Philly,  
 West Oak Lane, Philadelphia

# What zip codes are participants from?

27 responses total



# What do you do in the outdoor areas at SpArc now?

79 different answers from participants

# 13

Play basketball

# 18

Walk around

# 11

Sit at the  
tables & chairs

*More responses:* Garden, play games, hang out with friends, eat, make art, book club, dodge ball, clean up, go out to work, party, watch outdoor videos, get some fresh air



# Which of the following would you most like to see?

81 answers from participants; ranked with 6 as highest and 1 as lowest. Number indicates how many ranked that amenity highest or second-highest.

35 outdoor theater space / stage

exercise area

vegetable gardens

walking track

40 basketball court

37 shade trees



# What other ideas do you have for the outdoor areas?

75 different answers from participants

## 16

### SPACE FOR GAMES

bowling, kickball, track, sports equipment, basketball, Hot Wheels

## 13

### PLACES TO SIT

mats, lounge chairs, a lunch area, swings

## 11

### PLANTS

trees, flowers, tulips, vegetables, plant food for the community, peaches, apples, pears, grass

## 7

### FOOD

cookout, Dunkin Donuts, Wawa, snacks, snack bar, a restaurant, water fountain

*More responses:* a place for dance, fashion shows, music, a stage, crocheting, watching movies, artwork, animals like cats and dogs and birds, relaxation, a small park, a playground, somewhere for hot days and holidays, programs with family and friends

# "The new outdoor space at SpArc will be really amazing if it..."

68 answers from participants

[had] flowers, free snacks, cookout, clean basketball courts, football, had shaded trees and outdoor eating space, stage, trees, big chairs, snacks, place to play games, work out in the community, if it's a good way to walk back and forth, had a seating area, had games, other people, dunkin donuts, game stop, cars, trucks, a court, places to draw, art, coloring, water to drink, a pretty garden, shooting basketball, picnic tables, games, bright colors, had a place to eat lunches, pillows to lay on, benches, had space for picnic/lunch and exercise, place to play games, big trees, snacks, bright colors , swings, playground, chairs and tables, music, trees, would like ball games, rope, hopscotch , stage -- place to dance, balloons, chairs, stage, trees, outdoor games, trees, painted with bright colors, speakers for music, trees/plants, had a talent and fashion show, restaurant, had trees, playground, trees, places to sit, with superheroes, had a tennis court, vegetable garden, has color and flowers, hot wheels...

... had space for us to be outside.

... had more space for us to be outside.

... had more space outside.

... was larger.

... happens soon.

... gets done.

... is good.

# "The new outdoor space at SpArc will be really amazing if it..."

22 answers from friends, relatives, board members, and people who work at SpArc

... [was] used for some outdoor classes or crafts.

... was maintained and used.

... is approved for the young men and women who attend SpArc.

... lets everyone come together and makes us happy.

... invited people to form community.

...provides the clients with a garden and relaxing/walking space.

... provides activities for the community.

... becomes a quiet, bucolic place for the community.

... was usable by people of all abilities.

... allowed for people with mobility issues to use it.

... is useful to the participants and staff equally.

... had a water feature.

... had a lot of native shrubs and trees.

.... had color all year around.

... had theater with seatings around for celebrations or outdoor activities like eating outside.

....was a rest area.

....gave back to the participants and community.

... was barrier-free, easily accessible and kept secure at all times.

... was large enough to fit all of these things.

design concepts

COLLEGE OF ARCHITECTURE & THE BUILT ENVIRONMENT



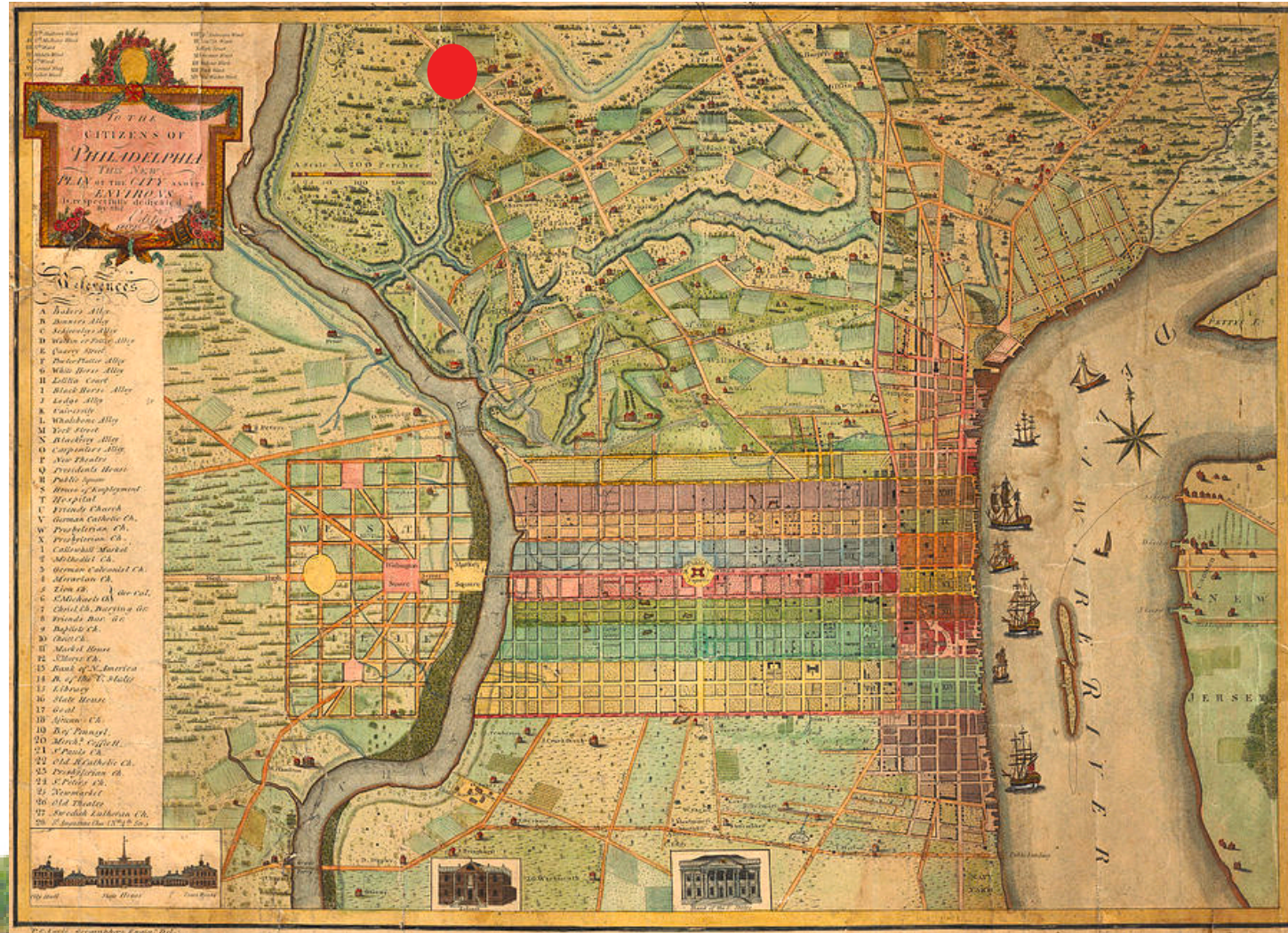
**Urban Natural: Design 4 SpArc Outdoors**  
*Colin Walsh*

# Bringing the Wiss to SpArc



# Reviving the Past Ecology into the Present

## Philadelphia 1700s



Past

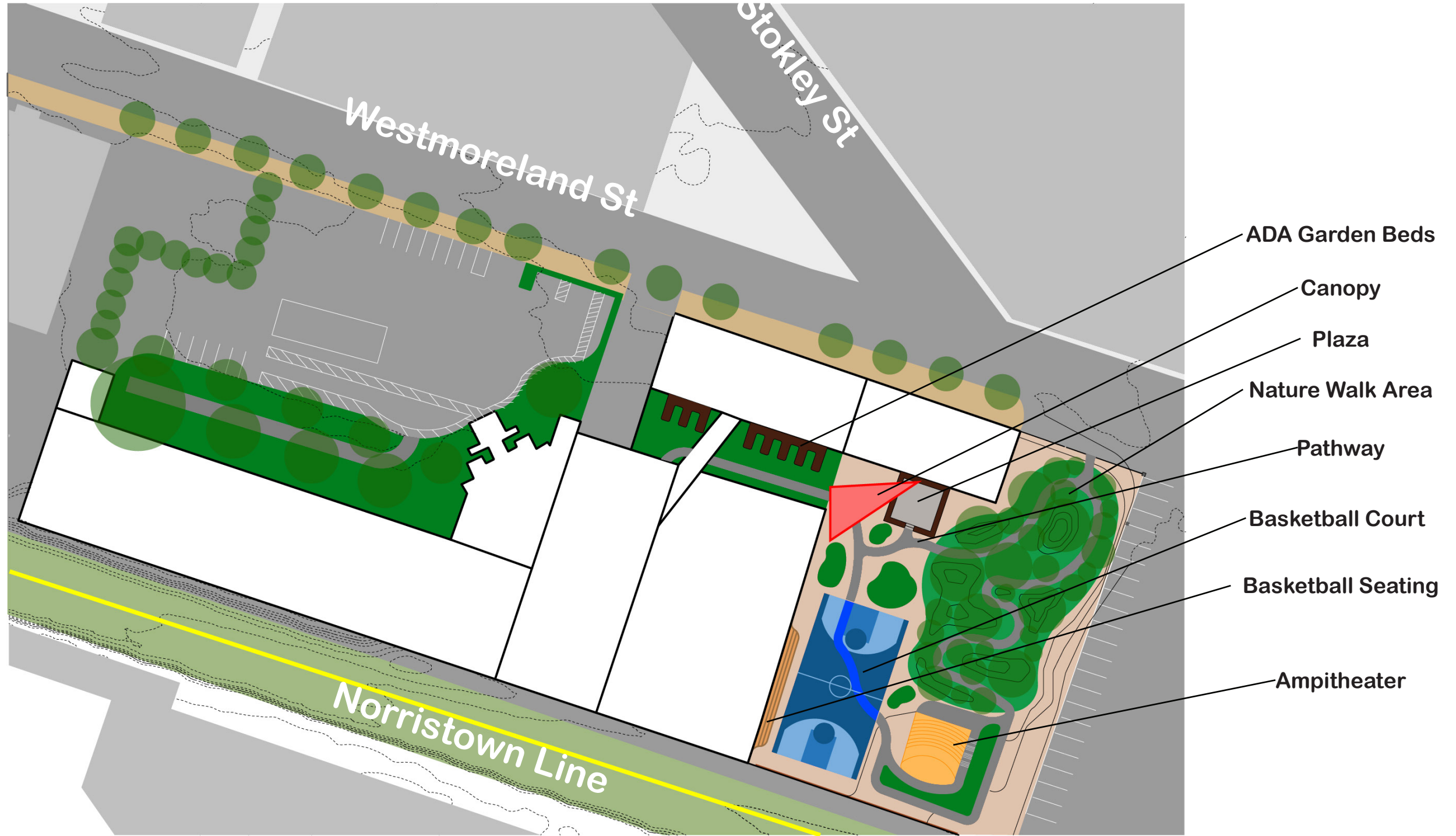


Present



Future

# Urban Natural: SpArc Site Design 4

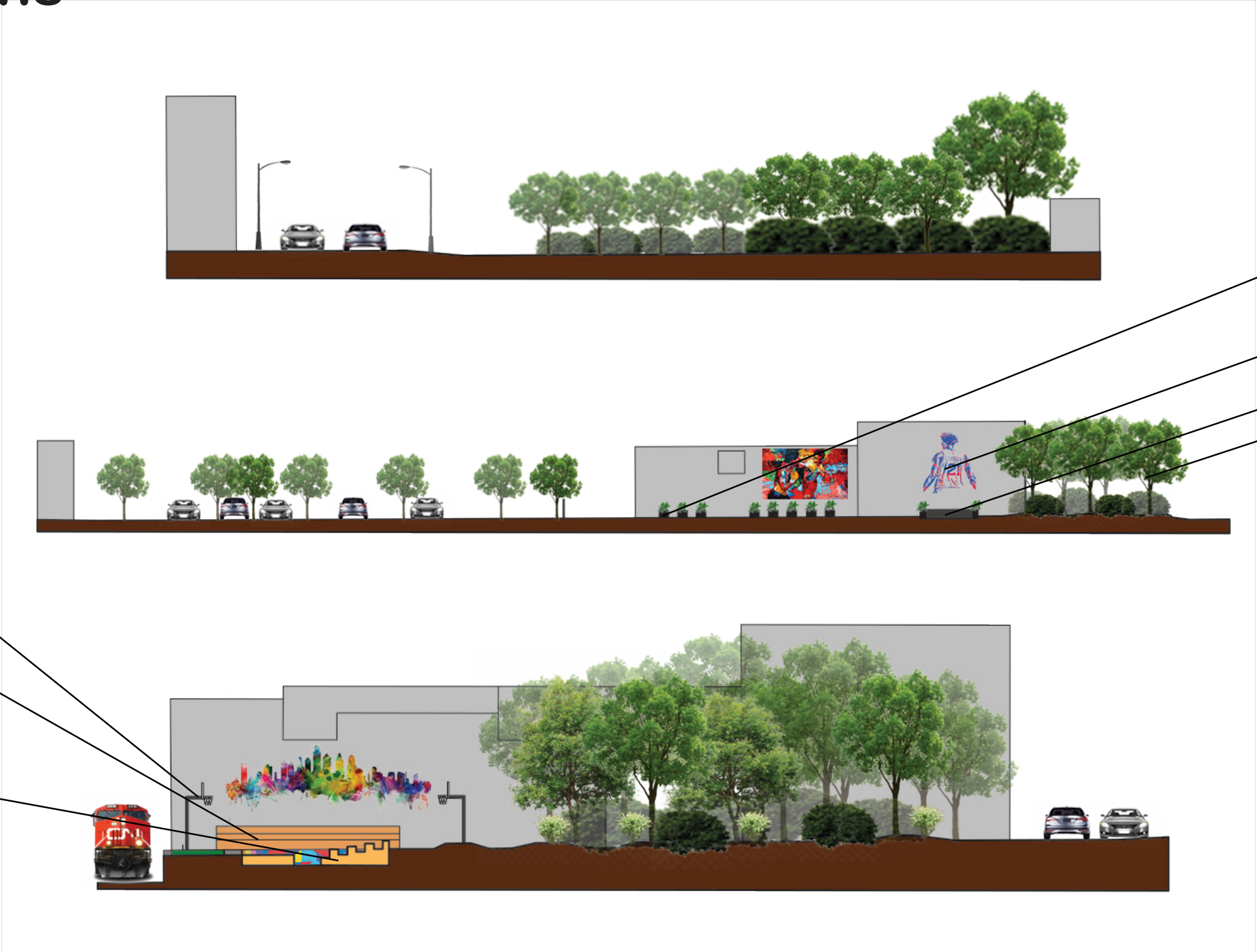


Site Plan





# Site Sections



ADA Garden Beds

Mural

Plaza

Nature Walk Area

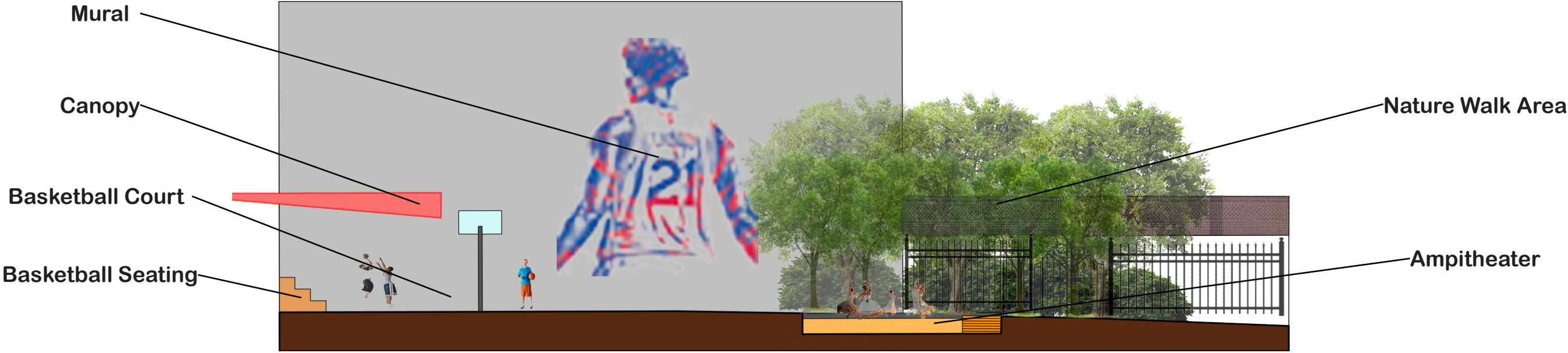
Basketball Court

Basketball Seating

Ampitheater

# Detailed Sections

## Nature Walk Area



COLLEGE OF ARCHITECTURE & THE BUILT ENVIRONMENT



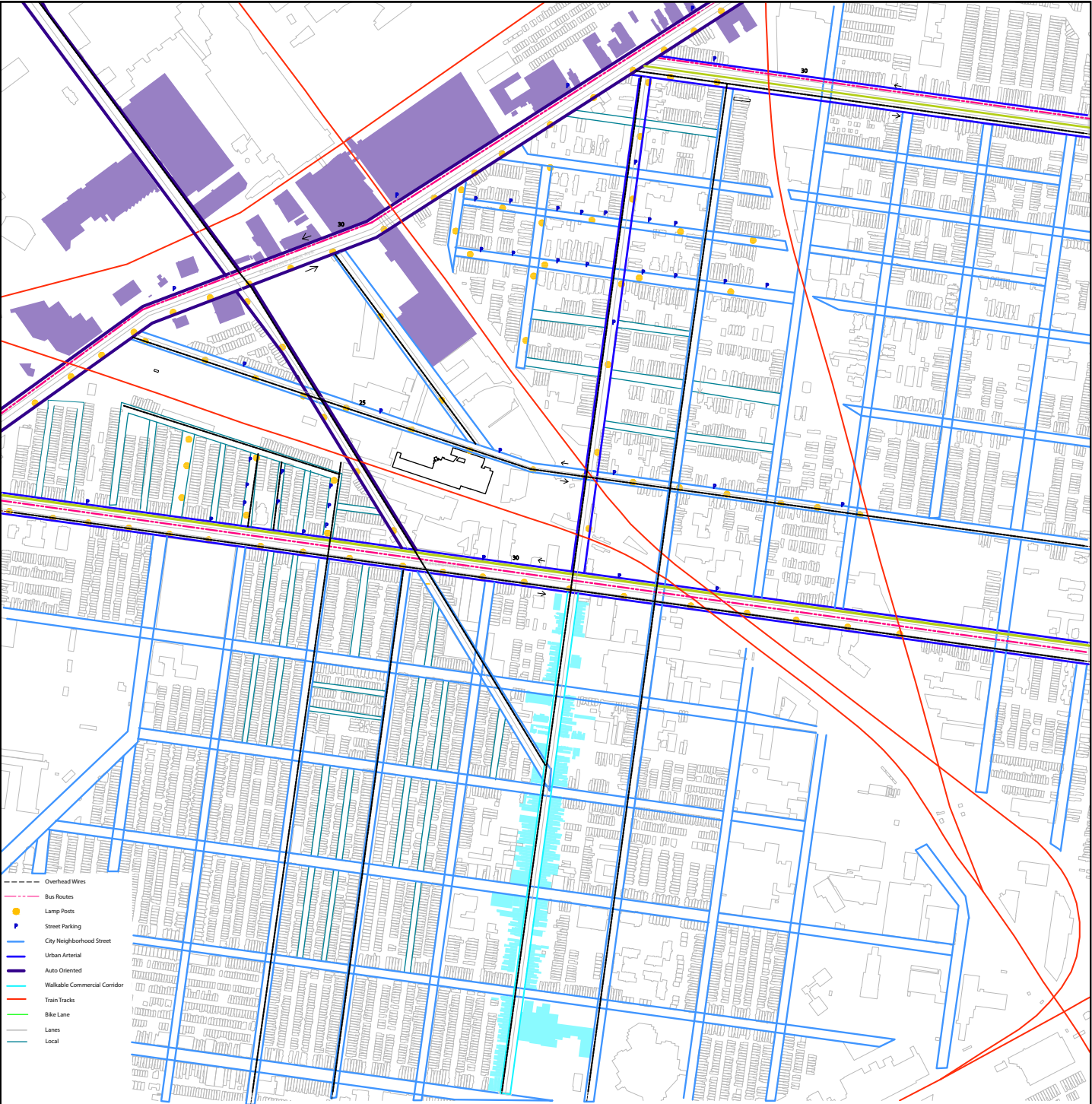
*Serma Basha*

# Studying Streets

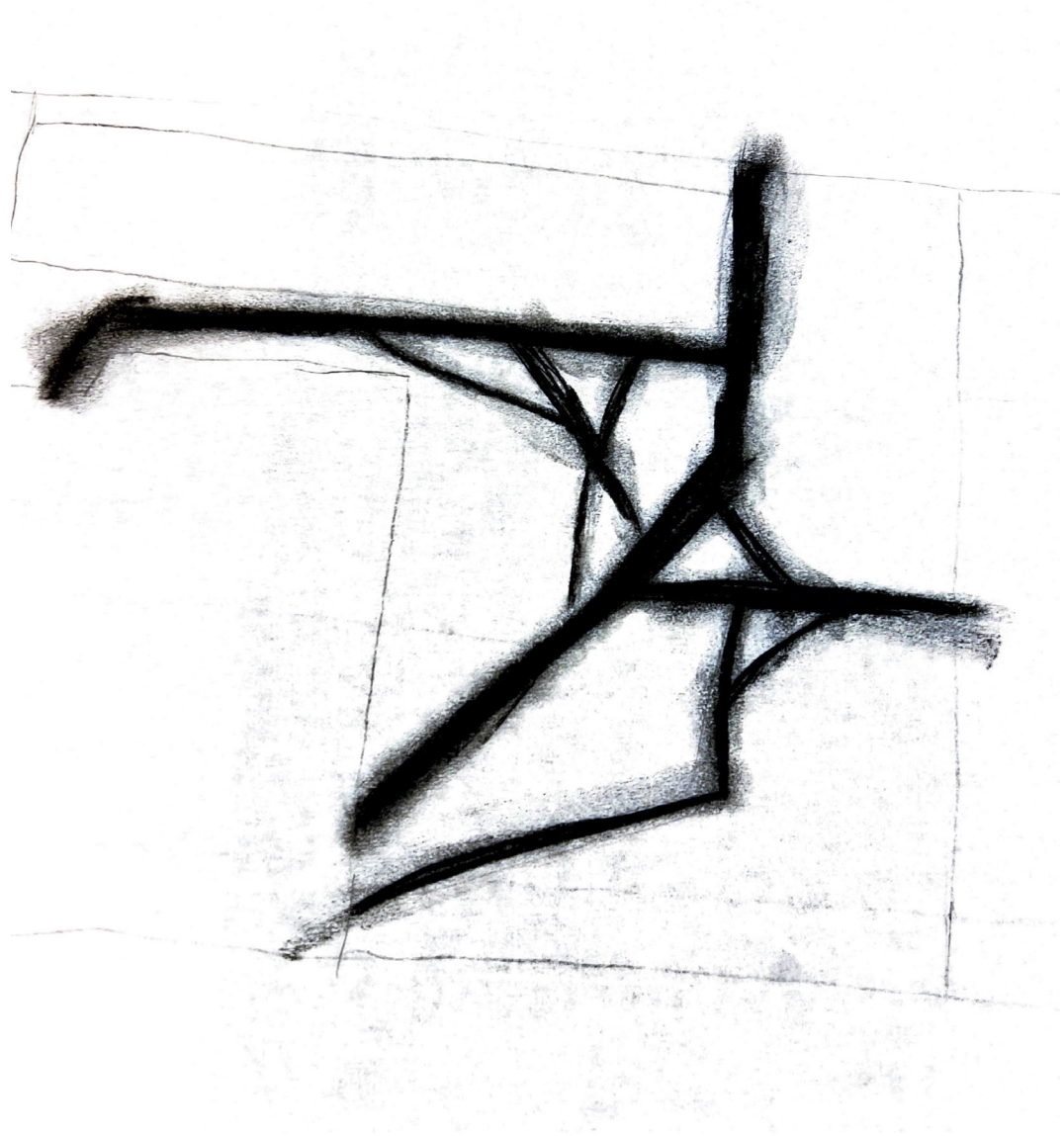
Streets are about connectivity, meeting points, and lead you to your destination.

There are different types of streets based on their intended use.

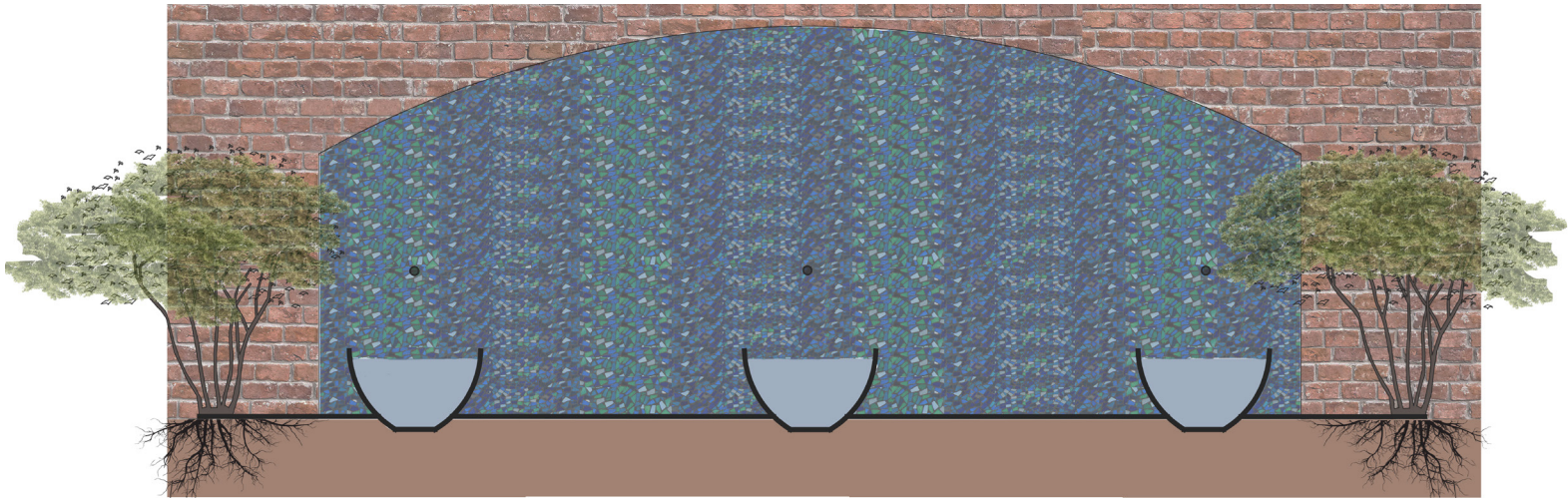
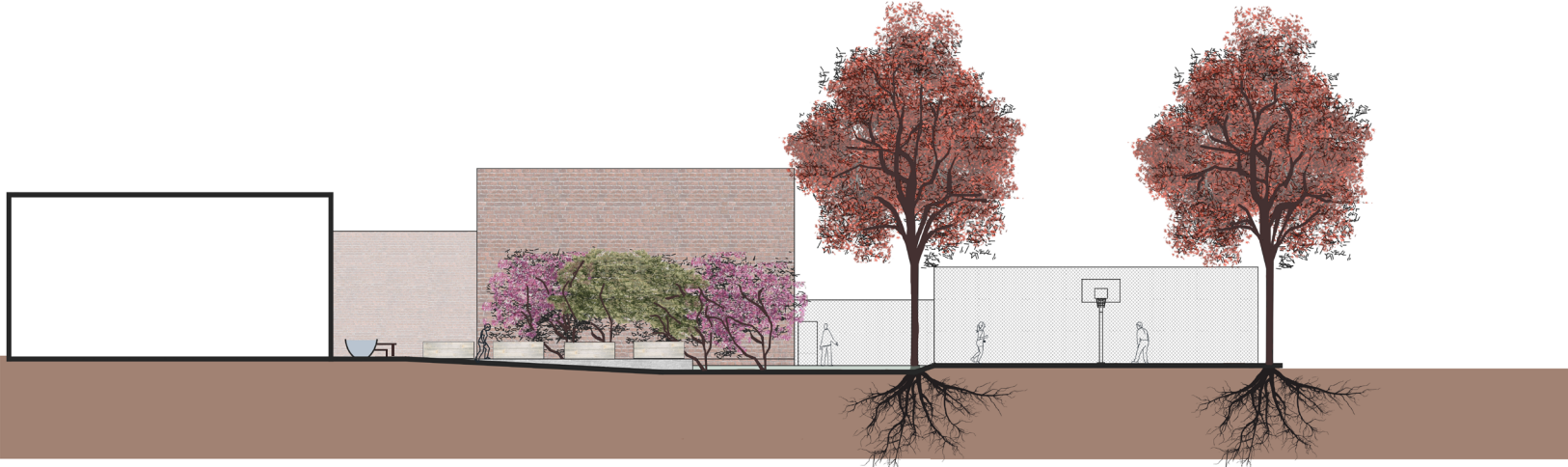
Connected this information when laying out paths.



# Form and Application



# Sections & Precedents

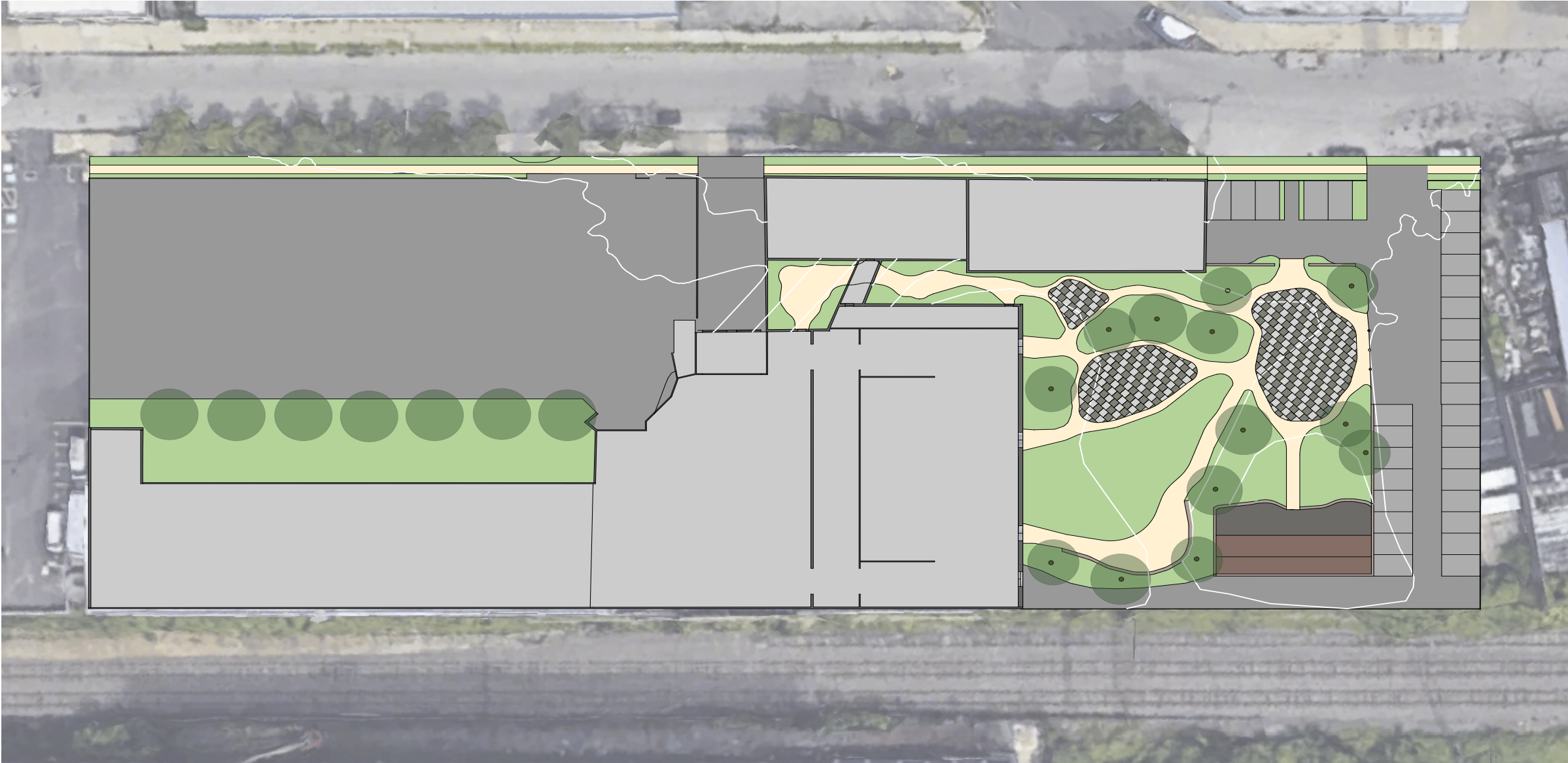


COLLEGE OF ARCHITECTURE & THE BUILT ENVIRONMENT



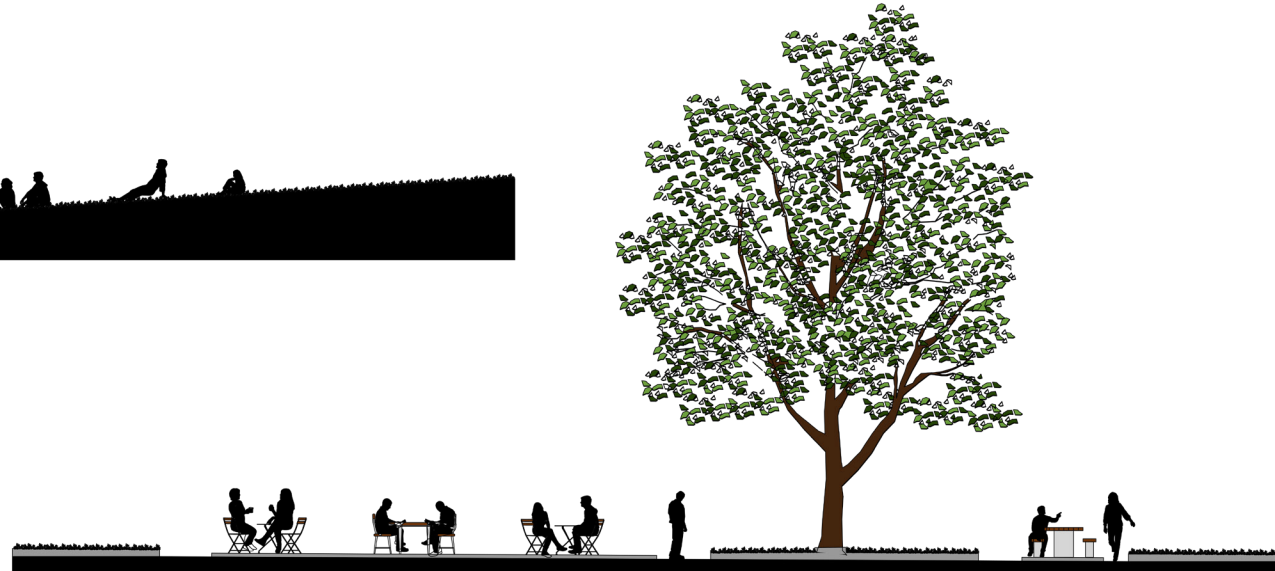
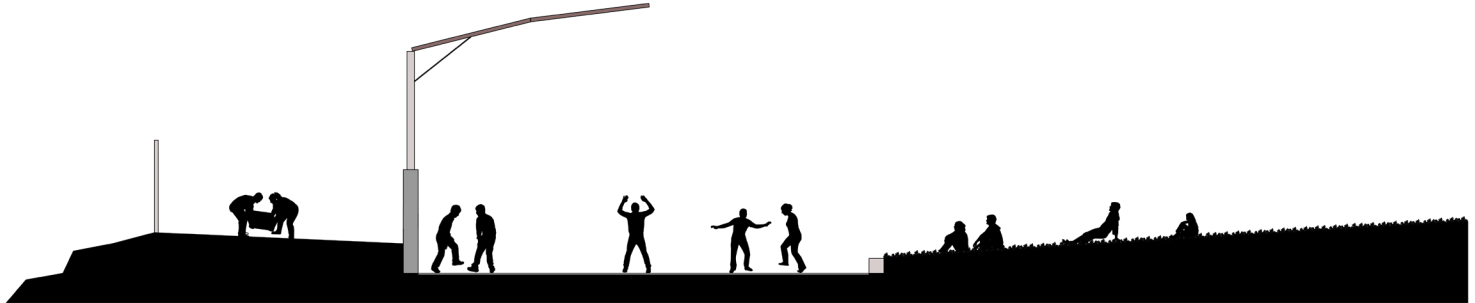
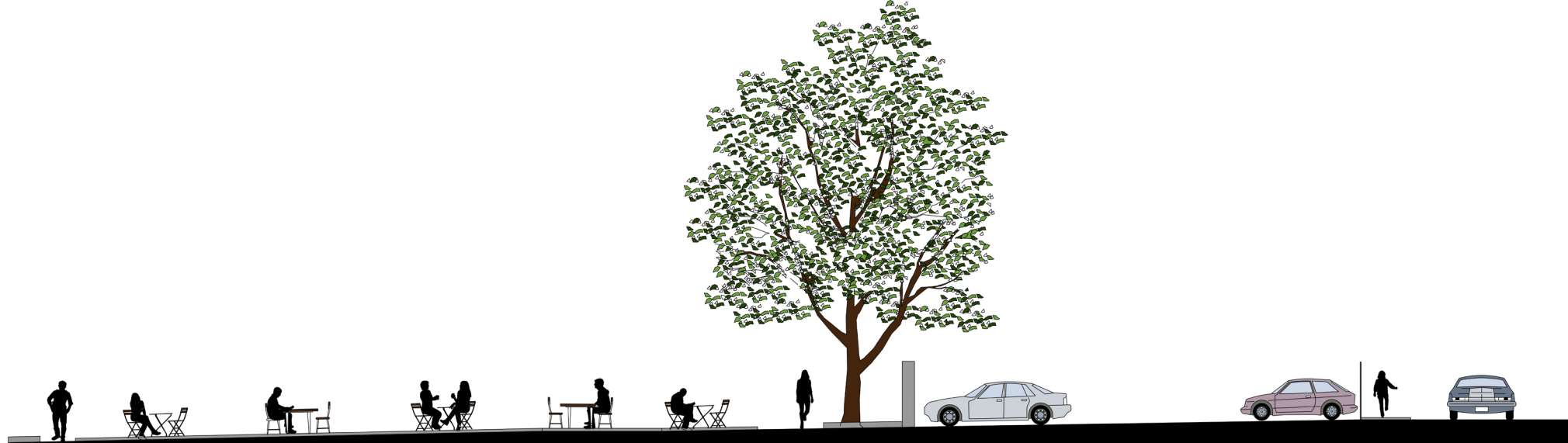
*Connor Milnes*

# DESIGN PLAN





# SECTIONS



**CREATE +  
PLAY +  
RELAX**



WELCOMING  
PRESENCE



OBSERVATION



RELAXATION



CREATION



GROWTH



SPORTS



FRIENDS



DESTIMULATE





COLLEGE OF ARCHITECTURE & THE BUILT ENVIRONMENT



**Through Material and Time**  
*Laila Hassan*

# THROUGH MATERIAL AND TIME



OLD BRICK- wider mortarlines and orange red color

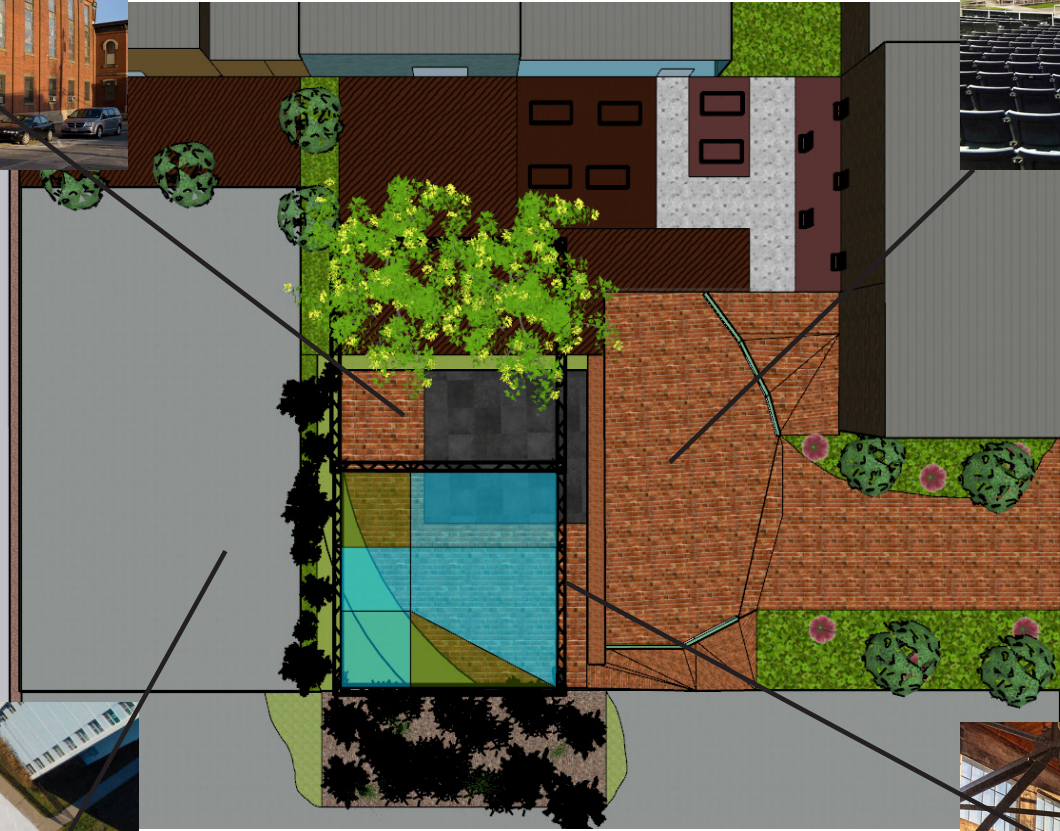


FIXED SEATING- chairs with armrests

BASKETBALL WITH NO BOUNDARIES- OPEN SPACE FOR MULTI ACTIVITY



STEEL WAREHOUSE CANOPY- used for protection while keeping the history



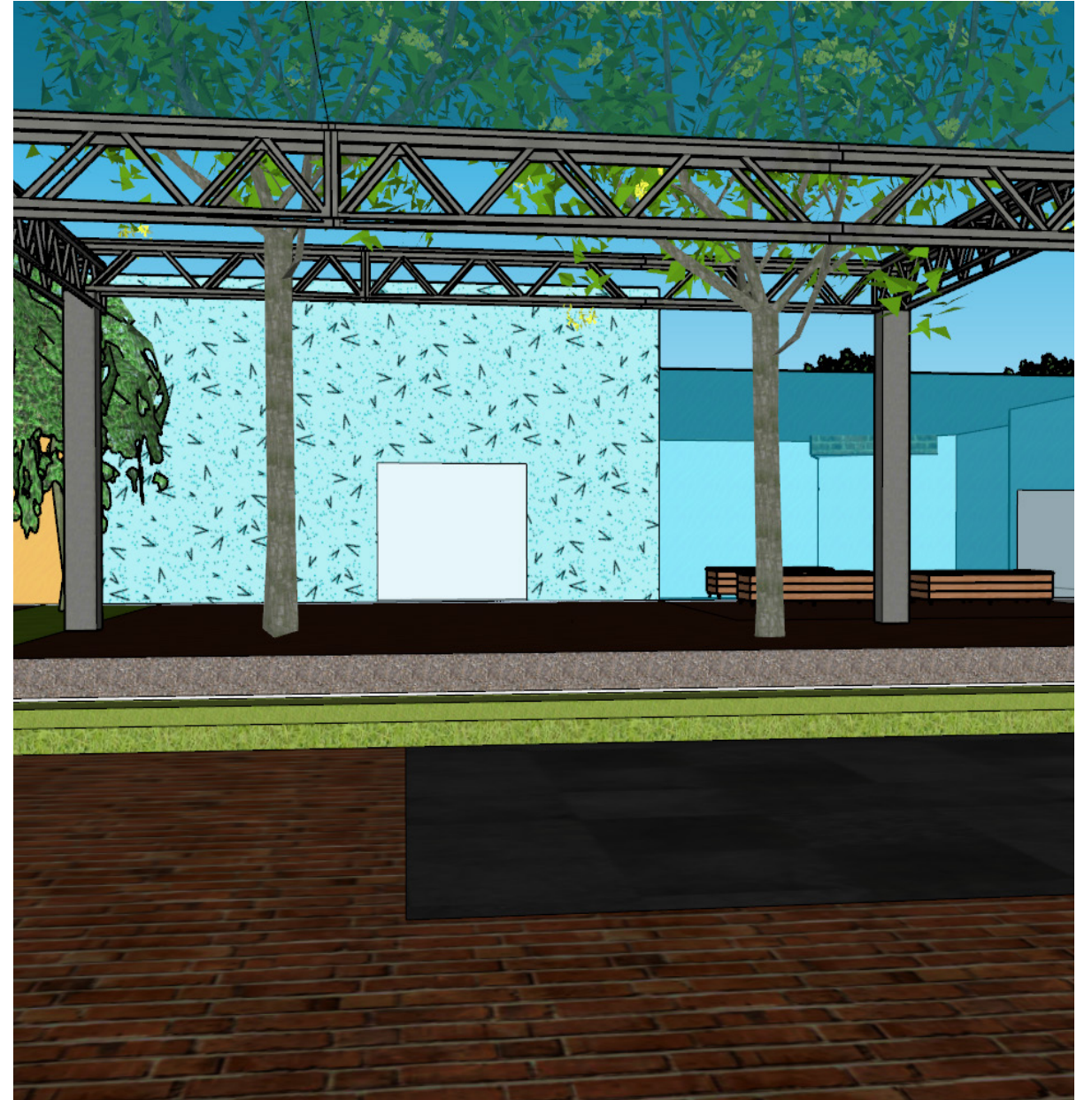
## MATERIALS PALETTE



PLAN



SECTIONS



PERSPECTIVE

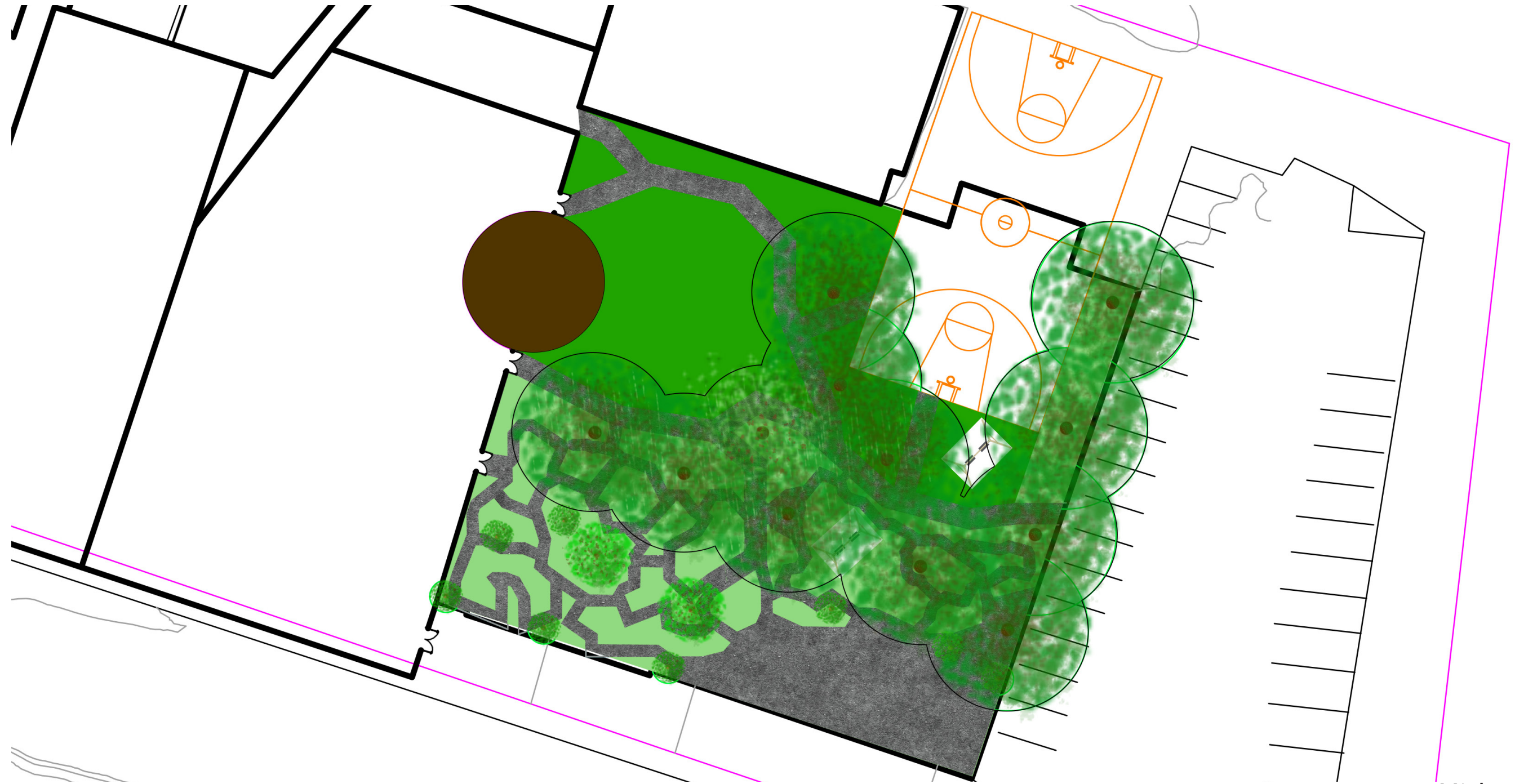


COLLEGE OF ARCHITECTURE & THE BUILT ENVIRONMENT

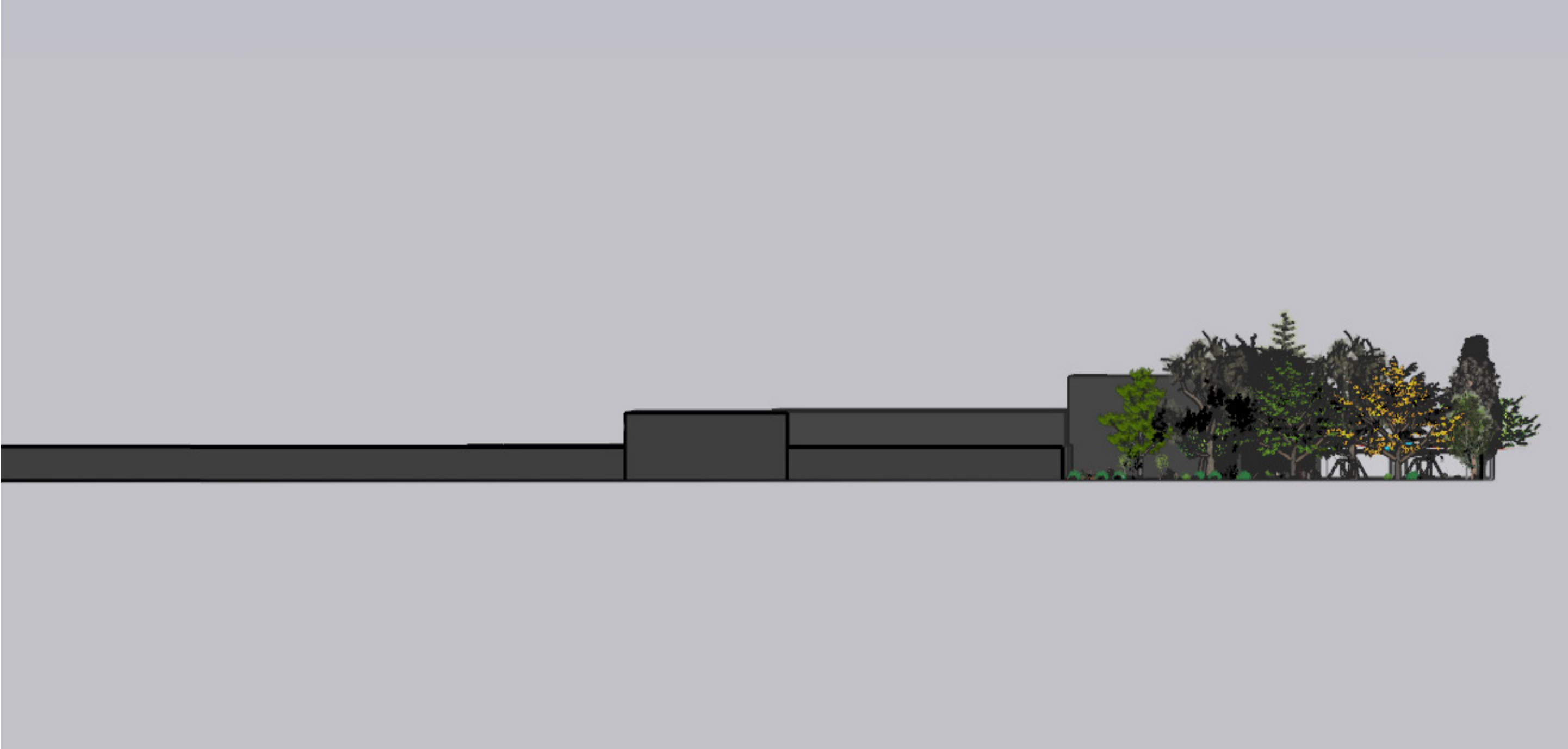


**SpArc Design for Flower Forest**  
*Michael Muesser*

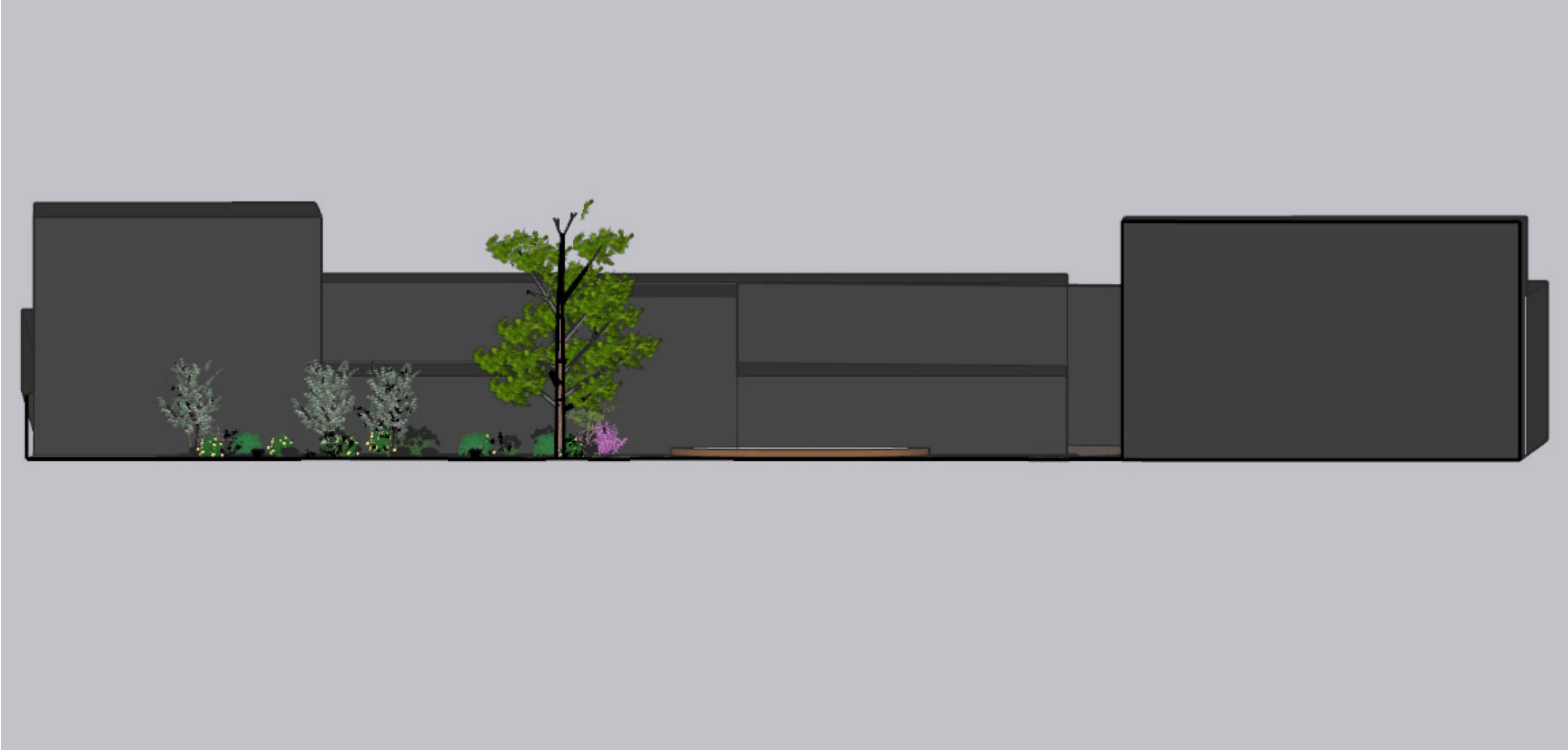
# Base Plan



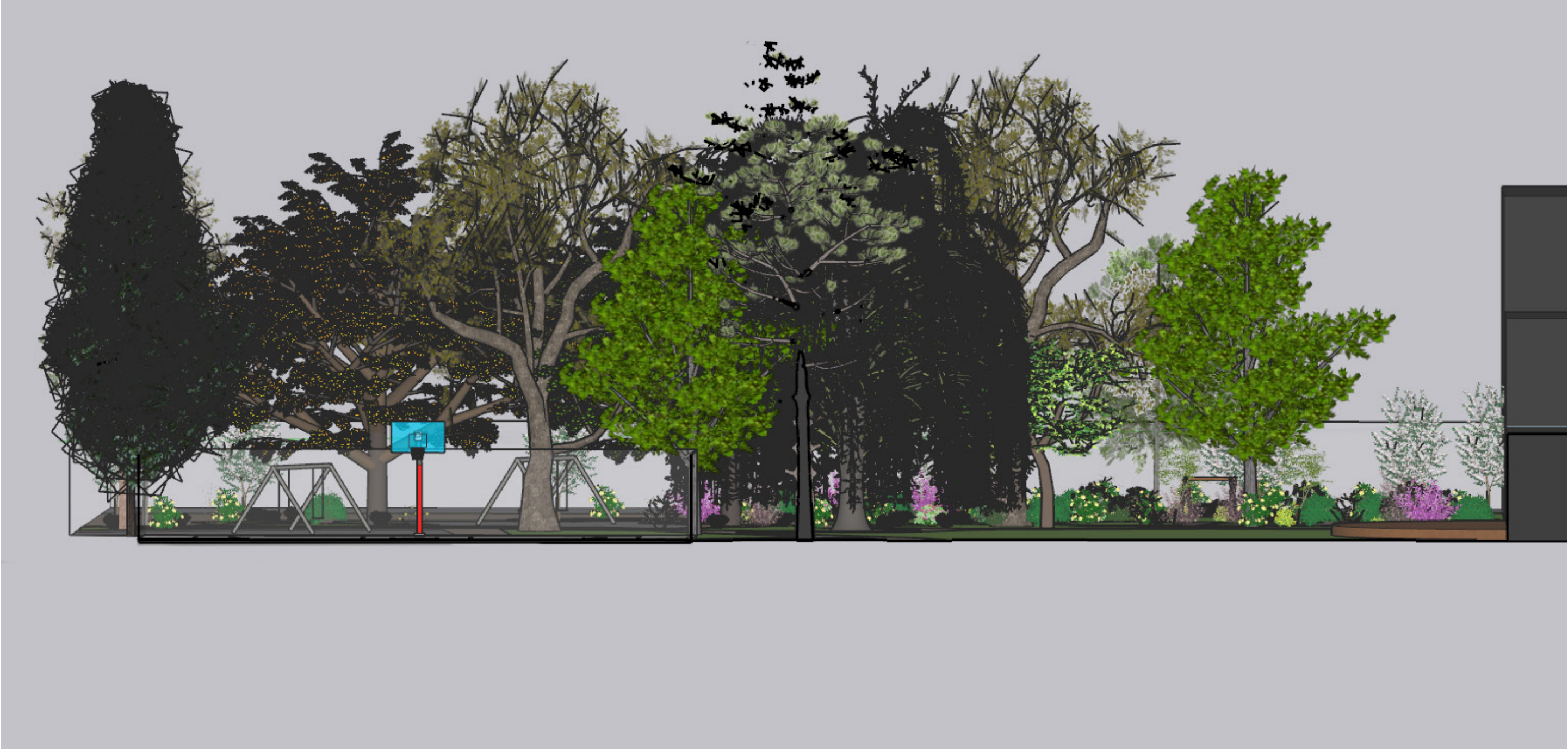
# Site Section 1



# Site Section 2



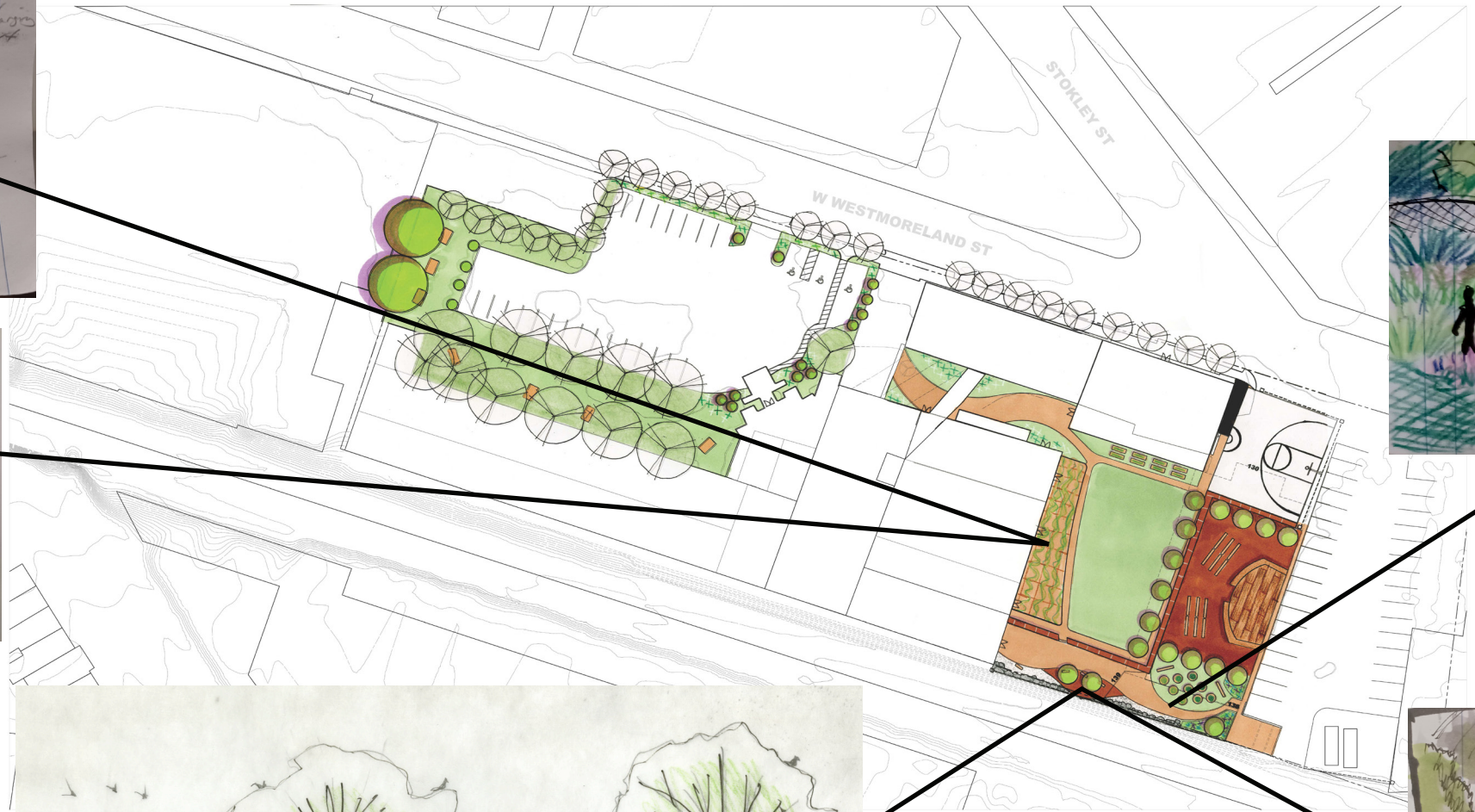
# Site Section 3

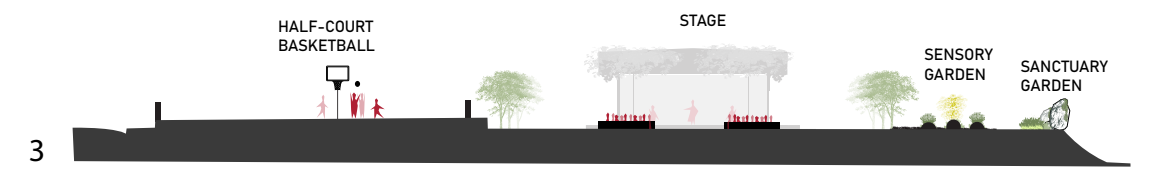
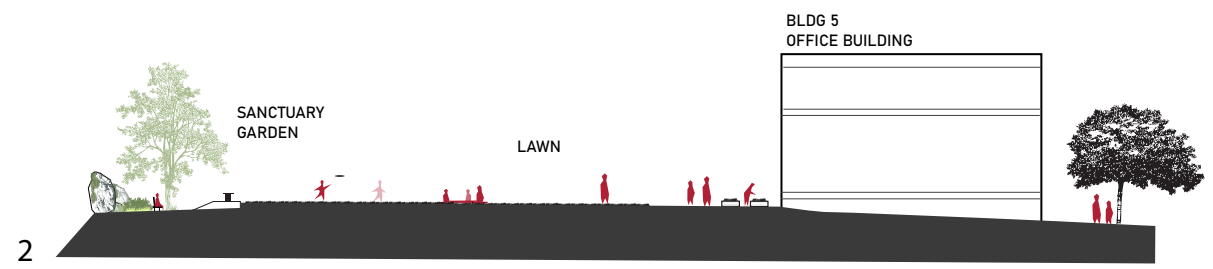


# SPARC PHILADELPHIA

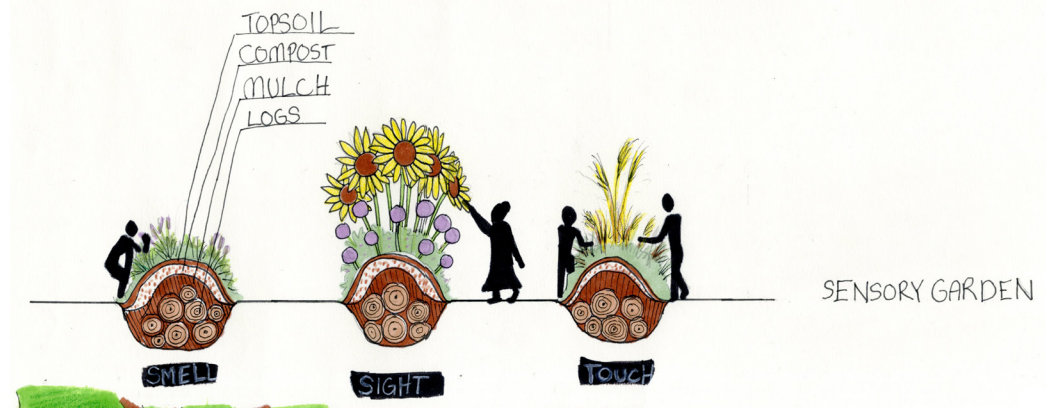
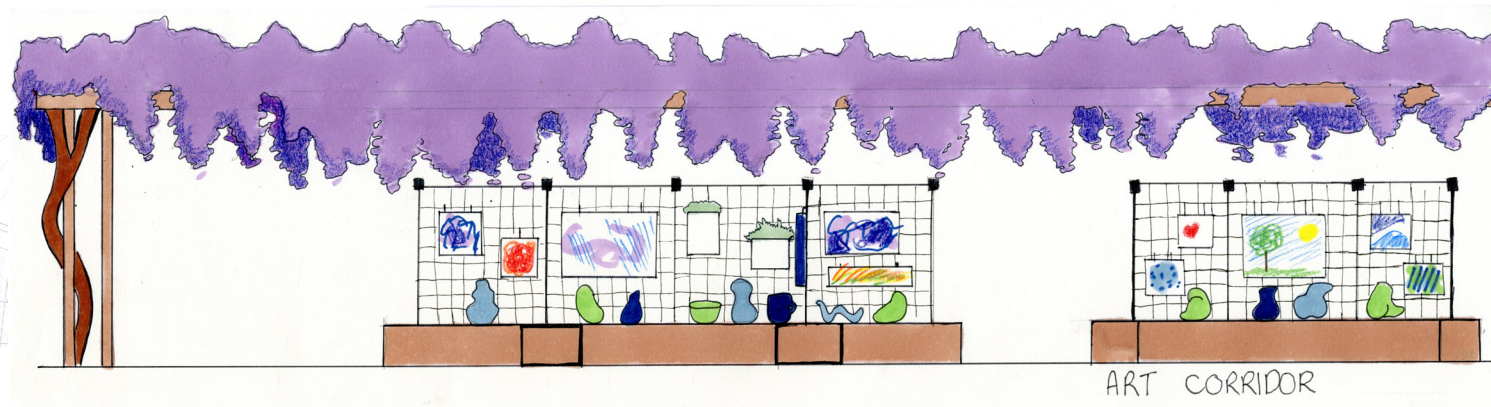
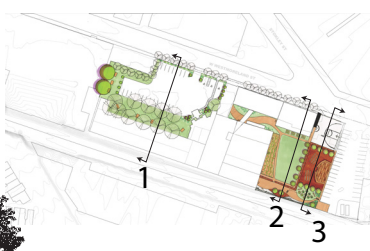
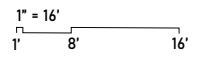
RECREATION  
GREENSPACE  
COMMUNITY  
DEVELOPMENT







SPARC PHILADELPHIA | PROPOSED SECTIONS  
2350 W Westmoreland St, Philadelphia, PA 19140





thank you!



### **SpArc Philadelphia**

Laura Princiotta, CEO

Nofre Vaquer, COO

Jammie O'Brien, Director of Marketing and Development

Gwyn Garrison, Marketing and Development Specialist

### **SpArc Workshop Participants**

Crystal F.

Frances W.

Johnette H.

Zaire

Thomas T.

Marcos

Richard T.

Durward

James C.

Corey

Keo L.

Stephen

### **Jefferson Health Center for Autism & Neurodiversity**

Kim Mollo, Occupational Therapy Clinical Coordinator

and OT doctoral students:

Alia Boynton

Sarah Chu

Lauren Kennedy

Danielle O'Connell

### **Site Visit Hosts & Guest Consultants**

Rob Schaeffer, PE & Principal, CVM

Charlie Abdo, Mark Gallini and Matt Pappajohn, Globe Dye Works

Janet Finegar, Northern Liberties Neighborhood Association

Bryan Hanes, Studio Bryan Hanes

Karen M'Closkey, University of Pennsylvania

### **Jefferson College of Architecture & the Built Environment**

Kim Douglas, Landscape Architecture Program Director

### **Guest Critics**

Jesse Forrester, Forrester Landscape Studio

Hanna Gold, Land Collective

Kari Sannino, Trust for Public Land

Susanna Addo, WRT

Prakul Pottapu, Studio Bryan Hanes

Krista Reimer, WRT